



"maintenance made easy"

Issue 101

**Making
your dream
floor a
reality!**

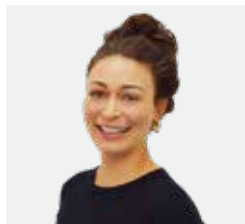


FREE advice
www.polycote.com

Freephone 0800 980 0852

USING YOUR OWN LABOUR?

We have a team of experienced advisors
ready and waiting to help



Would you like your floor installed for you?

We have skilled, approved
installers of the Polycote
range of flooring solutions
to the commercial and
industrial sector.



Ring now on 01234 943940
for a fast, free quotation



Need on-site advice? Call 01234 943940 to book a FREE site visit



3 EASY WAYS TO PAY

- We accept most credit and debit cards
- We also accept personal and company cheques on pro forma invoices
- 30-day accounts can be arranged, subject to status

PRICES

Prices shown do not include delivery or VAT.

VAT

Goods & carriage are subject to the current rate of VAT.

DELIVERY

Next-day delivery service UK mainland (excluding parts of Scotland). Carriage is charged subject to order quantity.

RETURNS

Returns are accepted subject to a 35% restocking charge.

Please note: we do not accept returns of any powdered products, manufactured to order, cut-to-size or non-standard items.

All reasonable care has been taken in compiling this catalogue and information is given in good faith. However, Polycote UK cannot guarantee the accuracy of any information contained herein and shall accept no liability for damage or loss in connection with the use of any products featured. Relevant datasheets should be followed when using Polycote products, and the user is responsible for establishing suitability of the product for its purpose. Products may vary slightly from those depicted or described, and specifications or prices may change at any time without prior notice. Any pictures and colour charts should not be deemed accurate in terms of colour due to limitations in the printing process. Polycote UK full standard terms & conditions apply. © 2021 Polycote UK

Contents

PRODUCTS

PAGE

SECTION 1

Floor Repair & Screeds

4 - 23

Floor Repairs	4 - 13
Expansion Joints	14 - 15
Fridge & Freezer Repairs	16 - 17
Self-Levelling Screeds	18 - 23

SECTION 2

Floor Preparation & Tools

24 - 29

Floor Prep. Machinery	24 - 26
Chemical Cleaners	27
Tools & Equipment	28 - 29

SECTION 3

Floor Coatings & Sealers

30 - 53

Dustproofers & Sealers	30 - 33
Floor Paints, Coatings & Primers	34 - 49
Interlocking PVC Tiles	52 - 53

SECTION 4

Non-Slip Products & Tapes

54 - 67

Marking Tapes & Tread Plates	54 - 57
GRP Anti-Slip Surfacing	58 - 61
External Floor Coatings	62 - 67

SECTION 5

Line Marking Tapes & Paints

68 - 71

SECTION 6

Draught Control, Door Brushes & PVC Strip Curtains

72 - 75

SECTION 7

Wall Coatings & Waterproofing

76 - 85

Wall Coatings	76 - 82
Waterproofing for Walls	83 - 85

SECTION 8

Roof Repairs, Coatings & Metal Paints

86 - 98

Metal Coatings	86 - 87
Balcony Coatings	88 - 89
Roof Repairs	90 - 91
Roof Coatings & Waterproofing	92 - 98

Creutex® EP

Do your floors or repairs keep breaking up?

Creutex EP continues to be the floor repair favoured by almost every industry. It is incredibly strong (70N/mm²) and **will feather edge with no problem whatsoever.**

Be sure of a fast and accurate mix every time!

No matter how small the hole, with its unique 1:1 mixing ratio you can mix any quantity you wish, thus eliminating expensive waste by having to mix the whole unit as with almost every other competitive product.

Creutex EP is quick and easy to use, together with a **rapid curing time, which means far less downtime**, hassle or disruption to your business.

Being **solvent-free and non-taint**, *Creutex EP* is suitable for use in medical, animal, food-processing and working environments.

It can be laid smooth or with a slip resistant texture for extra safety.



**Easy
1:1 mix
No waste**

- No complicated mixing ratios that require whole units to be mixed at one time, often resulting in a lot of waste.
- Our easy and fast 1:1 mixing ratio means you only mix what you need, making the job easier and saving a lot of unnecessary expense.
- The resin-rich formula enables the product to be applied without the need or additional cost of a primer.



**19 years old
and still going
strong!**



**Feather
edges with
ease**

- Virtually every hole requires feather edging and this is nearly always where the repairs start to break and crumble.
- *Creutex EP* has such incredible strength it can be feather edged with ease.
- The ability to feather edge removes the need to chop out and saves a lot of time and effort and **no chopping out means less time, less hassle, less material and less cost.**

All prices exclude delivery & VAT



Fast curing
& non-toxic

Extremely high strength epoxy floor repair

4 colours available

01

09

22

45

- The industrial doorway above had the typical 12mm lip that was causing issues with forklifts and pallet trucks.
- A ramp was formed with *Cretex EP*, going from 12mm to zero over approx. 400mm wide. The ramp was used by a 3 tonne forklift carrying around 2 tonnes and was still going strong after 19 years!

Cretex EP Code	Unit Size	Coverage @ 3mm thick	1-2	Unit Price			20+
102 10 + col ref.	10kg	1.5m ²	£96.80	£93.80	£90.70	£87.80	

Other products you may need			Price
256 0010	Solvent Cleaner 1 Litre		£19.80
217 1000	10" Trowel		£12.95
216 0700	7" Trowel		£10.85

All prices exclude delivery & VAT



Cretex® Rapid

Ultra-tough, fast-setting floor repair mortar

- Can withstand traffic in only 1 hour at 20°C
- Suitable for dry or damp areas
- Non-toxic, non-taint and odourless
- Easily part mixed as required – no waste

Cretex Rapid is a fast setting, very strong repair mortar (50N/mm²) that can withstand traffic in only 1 hour. It is simply mixed by adding the powder and liquid together (as much or as little as you like – meaning no waste) and is extremely easy to trowel out to a neat smooth finish.

The major benefits of *Cretex Rapid* are that it is water-resistant and will not shrink whilst curing. It will adhere to and protect reinforced steel bars. Due to its fast-curing ability, it will not slump and may be used on vertical or horizontal surfaces.

Typical Uses: *Cretex Rapid* is ideal for repairs to floors, kerbs, plinths, columns, coping, sills, lintels and beams. Being solvent-free, non-toxic and non-taint, it is suitable for use in medical, animal and food processing areas.

Order Code	Unit Size	Coverage @ 5mm thick	Unit Price		
			1-2	3-9	10+
104 1000	10kg	1m ²	£96.90	£92.75	£88.62

All prices exclude delivery & VAT



Cretex® PU

Resilient chemical resistant concrete repair compound

- Can be laid to a feather edge
- No priming needed – unless very porous
- Cures in low temperatures, down to 5°C
- Will take light pedestrian traffic after 6 hours, light wheeled traffic after 24 hours and heavy duty traffic after 48 hours.
- Resistant to a wide range of chemicals

This three-part polyurethane floor repair compound is exceptionally strong (70N/mm²) and can be easily trowelled to a smooth finish.

The major benefit of Cretex PU is that the aggregate filler is provided separately and is added to the resin to provide whatever consistency you require. This makes it easier to apply than the epoxy version.

Furthermore, it offers excellent resistance to abrasion, impact and vibration, combining slight flexibility with exceptional toughness.

Typical Uses: Cretex PU is ideal for heavy-duty repairs that require impact or chemical resistance.

Order Code	Unit Size	Coverage @ 5mm thick	Unit Price		
			1-2	3-9	10+
106 1000	10kg	1m ²	£98.80	£94.70	£91.50

All prices exclude delivery & VAT





Bondex™

Highly advanced polymer latex

- **Simply mix with sand and cement**
- Dramatically increases compressive strength
- Screed may be laid as thin as 6-7mm
- Tenacious adhesion to most surfaces



Bondex is an incredibly strong styrene butadiene co-polymer that has been designed for the larger repairs. It will not only dramatically increase the strength of a sand and cement mix, but also will reduce the shrinkage of the curing material due to a much less water content.

The flexural and tensile properties are also greatly enhanced and this allows the product to be laid down to only 6mm thick.

Should thinner repairs be required (less than 6mm), mix the polymer with 1:1 KD Quartz Sand/cement and mix with neat *Bondex*. Not only will this mixture cure very quickly but will also cure to a granite hard finish.

With the ability to cure to a damp surface, this makes the product ideal for damp areas and also floors with no DPM such as driveways and all external areas, grain stores and piggeries, as well as general industrial repairs.

Bondex Code	Unit Qty	Coverage	Unit Price
118 0500	5L	5 Litres Bondex mixed with 25kg cement & 75kg sharp sand covers 9.5m ² @ 6mm thickness	£52.50

Bondex Code	Unit Qty	Coverage	Unit Price
118 2500	25L	25 Litres Bondex mixed with 125kg cement & 375kg sharp sand covers 47.5m ² @ 6mm thickness	£189.90

All prices exclude delivery & VAT



Easipatch

Very fast setting, easily poured compound for rough/damaged concrete

- **You can lay this as thin as you like – it's unbelievable and rock hard!**
- No priming required (Self-priming formulation)
- Can be laid down to only 1mm thick
- 80N/mm² in only 1 day
- Dry surfaces only
- Fantastic for levelling worn concrete
- Extremely easy to use. Simply pour onto concrete and smooth with a trowel

Its exceedingly high strength ensures that Easipatch will withstand even the heaviest traffic and the fact that it will achieve 40N/mm² in only 2 hours means almost zero downtime.

Easipatch has been specifically formulated to be one of the easiest products to use for levelling rough or damaged concrete.

Easipatch is an extremely fluid and easy-to-use floor repair compound for rough or damaged concrete, giving an incredibly high compressive strength that exceeds concrete.

Easipatch may be laid to a feather edge with superb impact resistance and its rapid curing time minimises disruption to working environments. It can be applied to damp or dry surfaces, inside or outside.

No priming is needed, simply pour onto concrete and smooth with a trowel.

Typical Uses: *Easipatch* is ideal for repairs to concrete floors, worn steps, filling bolt/potholes and spalled concrete floors.

Easipatch Code	Unit Size	Coverage per Unit	Unit Price		
			1-2	3-9	10+
121 0500	4.35kg	1.2m ² @ 2mm	£59.90	£55.95	£52.25

All prices exclude delivery & VAT



Cretex OT Mortar

An excellent repair mortar for use on greasy or oil-contaminated surfaces

- Solvent-free, non-toxic and non-taint
- Extremely easy to use
- Suitable for use in food environments
- Will withstand heavy traffic
- XFH version available where downtime is limited

Cretex OT Mortar has been specifically formulated for repairs in both oily or greasy conditions. Such conditions cause major problems for many industries due to lack of downtime and/or the ability to be able to clean the areas sufficiently.

OT Mortar not only has the unique ability to adhere to oil contaminated floors but is also excellent for use where rising damp is an issue.

This incredible formulation is attracted to such contamination(s) and will lock the surface solidly, allowing the mortar to cure – even to a feather edge.

Typical Uses: Ideal for use in factories, aircraft hangars, railway maintenance depots, food factories, car workshops, engineering plants and many other areas.

Cretex OT Mortar Code	Unit Size	Approx Coverage	Price
113 3200 - Std	33kg	3 sq.m @ 5mm	£258.90
113 3299 - XFH	33kg	3 sq.m @ 5mm	£298.80

All prices exclude delivery & VAT



Excellent
for larger
areas

Cretex EP Mortar

Extremely tough, three-part epoxy mortar

- Extremely easy to use
- Withstands very heavy traffic
- No priming needed
- Can be over-coated in only 4 hours
- Solvent-free, non-toxic, non-taint
- Suitable for food environments

Cretex EP Mortar is an extremely tough three-part epoxy mortar. It is ideal for patching and repairing large areas prior to over-coating with a floor coating or a screed.

A primer is not generally required. However, for porous surfaces, the use of *EP Primer* is advised. *Cretex EP Mortar* is low odour, solvent-free, non toxic and non-taint and can therefore be used in food environments.

Please note: If small repairs are needed, you may prefer to use *Cretex EP*. See pages 4-5.



Typical Uses: *Cretex EP Mortar* is ideal for almost any floor repair and is particularly good for levelling large repairs. It is ideal for use in factories, aircraft hangers, railway maintenance depots, food factories, car workshops, engineering plants, and many other areas.

Cretex EP Mortar Code	Unit Size	Approx Coverage	Unit Price	
			1-4	5+
109 3000	30kg	3 sq.m @ 5mm	£196.80	£192.75

All prices exclude delivery & VAT



May be used
by traffic in
10 seconds

Instantex™ Repairs roads and floors instantly

Repairs tarmac, asphalt and concrete

- Fills any shape, hole or joint
- Wet or dry areas
- No mixing or curing times – instant repair
- Application range from +40°C to -40°C

Instantex is an instant, permanent road repair material conforming to UK Highways specifications.

An extremely versatile product that requires no mixing and may be applied rapidly in any weather, Instantex withstands heavy traffic immediately.

Please Note:

Our aggregate size is far smaller than nearly all the competition. This ensures far greater compaction and a far harder, longer-lasting damage-resistant finish. **Prove it for yourself today.**

Instantex™ Order Code	Unit Size	Coverage per Unit	Unit Price				
			1-4	5-9	10-24	25-49	50+
116 2500	25kg	1m² @ 15mm	£65.80	£61.75	£59.75	£56.90	£53.50



Cove Form EP

Makes the floor and wall joints more aesthetically pleasing and easier to clean.

- **Far easier to keep area clean**
- Very easy to use
- Premium quality non shrink, cove mix.
- Ideal for all hygienic areas requiring an easy-clean finish, such as washrooms, medical, food and laboratory areas.

Cove Form EP Order Code	Unit Size	Coverage per Unit	Unit Price
119 1500	15kg	20m @ R35	£94.80

All prices exclude delivery & VAT

Crackfiller EP100

Pourable crack filler epoxy compound

- Re-bonds lifting floor screeds and toppings
- Fast-curing, non-shrink formulation
- Extremely strong
- Resistant to chemicals and freeze-thaw cycles
- **Fills cracks from 0.1-10mm**

This free flowing pure epoxy resin has been professionally developed for deep penetration into gaps and cracks and due to its incredibly low viscosity, this allows the product to completely fill incredibly thin cracks, down to just 0.1mm!

The mechanical strength of the epoxy is several times higher than that of concrete and will therefore hugely strengthen the affected areas. It must be born in mind however that if there is structural movement, it may well be advisable to instigate an expansion joint – please ring for further advice.



Crackfiller Code	Unit Size	Approx. Coverage @ 3mm x 10mm	Unit Price	
			1-3	4+
135 0100	1kg	33 Linear Metres	£42.80	£38.95
135 0200	2.5kg	82.5 Linear Metres	£82.70	£76.85
239 0001	Pouring Jug		£4.25	

Typical Uses: Internal Crackfiller is designed for filling and bonding of cracked concrete, bonding of lifted floor toppings and structural support where dynamic load resistance is required.

External Crackfiller

A tough crack filler for all external substrates

- Extremely tough and waterproof
- **Withstands heavy traffic**
- Quick and easy application

Polycote *External Crackfiller* is fully waterproof and has been professionally developed to both fill and seal cracks and joints from 3mm to 50mm wide, in virtually any substrate – particularly asphalt and concrete.

Withstanding heavy traffic and goods vehicles, External Crackfiller provides long-lasting protection from water ingress. It prevents the 'washing out' of the substrate (the cause of voids /slab cracking). It also prevents unsightly plant growth/damage caused by root attack.

External Crackfiller is applied cold, removing the need to involve any hot works.



External Crackfiller	Unit Size	Coverage @ 6mm (w) x 20mm (d)	Unit Price	
			1-3	4+
405 2500	25kg	110 Linear Metres	£282.80	£277.90
405 0900	9kg	40 Linear Metres	£177.80	£173.25
405 0003	3kg	Aggregate	£8.90	
225 0040	50mm	Drawbox	£64.50	

Typical Uses: External Crackfiller may be applied to asphalt, macadam and concrete.

All prices exclude delivery & VAT

Jointex™ XFH

A twin pack acrylic based flexible jointing compound

- **Main benefits – fast curing in only 1 hour**
- High strength – allowing up to 100% movement within the joint
- Curing time – 14-20 hours
- Minimum application temperature - 0°C
- Coverage @ 10mm x 10mm – 29 linear metres

Jointex XFH is a very fast-curing and flexible expansion joint repair. This resin has been specifically formulated with extra fast hardeners to achieve a rapid return to work and to ensure minimum disruption. It offers high strength with excellent elongation characteristics, allowing up to 100% movement within the joint.

Jointex XFH Order Code	Unit Size	Approx. Coverage @ 10x10mm	Unit Price
144 0407	4kg	29 linear metres	£158.75



Typical Uses: For fast repairs to expansion or construction joints, minimising disruption to busy areas in both commercial and industrial areas.



Jointex™ SP

Chemical resistant polyurethane joint sealant

- **Easy-to-use single-pack joint sealant**
- Fast-curing polyurethane
- Tough and good resistance to heavy traffic
- Excellent flexibility
- Superb adhesion to most surfaces
- SP Primer should be applied to porous surfaces

Gun-applied moisture curing polyurethane floor joint compound with outstanding resistance to joint movement, coupled with high-strength adhesive properties.

Typical Uses: Jointex SP is ideal for vehicular traffic and pedestrian areas, temporary joint filling or where extreme expansion is a problem.

Jointex SP Order Code	Unit Size	Approx. Coverage @ 10x10mm	1 Unit	2-3 Units	4+ Units
148 0301	12 pack	45 linear metres	£154.90	£149.75	£148.85

All prices exclude delivery & VAT

Jointex™ PU

High-strength twin pack polyurethane, pourable joint filling compound.

- **Main benefits – maximum flexibility** and highly resistant to a wide range of chemicals
- Pot life – 50-70 minutes
- Curing time – 14-20 hours
- Minimum temperature – +5°C
- Coverage @ 10mm x 10mm – 45 linear metres

With excellent chemical resistance together with exceptionally high adhesion and compression strength, Jointex PU offers long term protection for almost every conceivable type of job. Extremely tough yet flexible, it has outstanding resistance to impact and will withstand continued forklift traffic.



Jointex PU Order Code	Unit Size	Approx. Coverage @ 10x10mm	Unit Price
140 0505	5kg	45 linear metres	£154.80

Typical Uses: Primarily designed for filling expansion and construction joints in concrete floors. *Jointex PU* also has extra chemical resistance.



All prices exclude delivery & VAT



Creutex® LT

Fast-curing low-temperature concrete repair mortar

- Reaches the strength of concrete 25N/mm² compressive in only 2 hours
- Achieves a full strength of 55N/mm²
- Can be applied on damp surfaces
- May be used between -20°C & +35°C
- Application thickness: 10mm-50mm per layer

A specialist cementitious floor repair mortar with a very fast cure at low temperatures and with a very rapid strength build up.

Ideal for chilled food areas due to its non tainting, odourless formulation.

Typical Uses: Particularly suited to cold store areas due to its low-temperature curing ability and good adhesion to damp areas. Also ideal for repairs to floors, columns, steps, nosings, kerbs etc., in busy environments needing minimal downtime.

Creutex LT Order Code	Unit Size	Coverage @ 10mm thick	Unit Price		
			1-2	3-9	10+
112 2500	25kg	1.2m ²	£148.50	£142.90	£138.85



Jointex™ CSG

Professionally formulated for expansion joints in fridges & freezers

It is specially formulated to achieve a rapid cure at very low temperatures. It offers high strength with excellent elongation characteristics, allowing up to 100% movement within the joint.

- Very fast curing time of only 2 hours
- Jointex CSG achieves a rapid cure at temperatures down to -30°C.

Jointex CSG Order Code	Unit Size	Approx. Coverage @ 10x10mm	Unit Price
146 0407	6kg	29 Linear metres	£167.35

All prices exclude delivery & VAT

Creutex® MC

Extremely fast-curing low-temperature floor repair

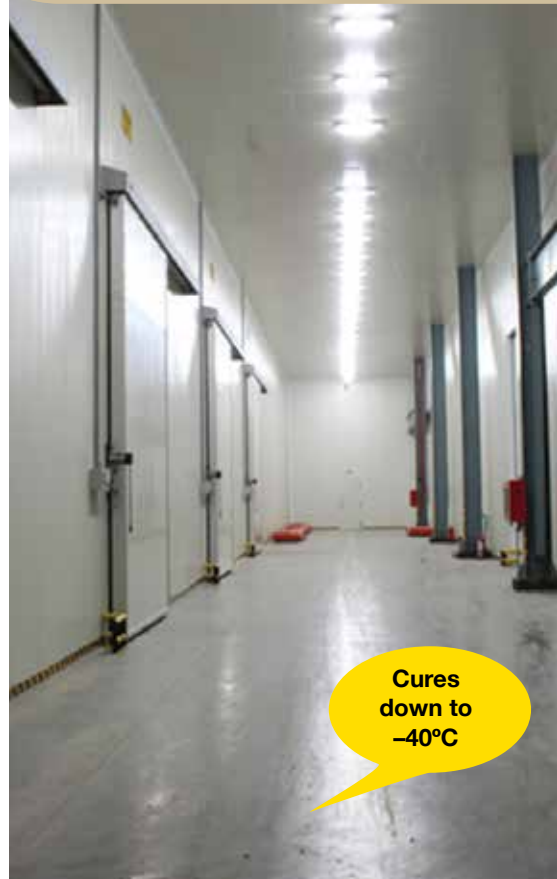
- **Ready for traffic after only 45 minutes**
- Incredible 75N/mm² compressive strength after 2 hrs
- Will feather-edge with superb impact resistance
- Ideal for cold stores, fridges and freezers
For thicker applications (15-50mm) use *Deepfill* version.
- For porous areas use *MC Primer*
- Very fast curing = less downtime

MC Std - For temps. above 0°C

MC Std Code	Unit Size	Description & Coverage	Unit Price
108 1600	16kg	Creutex MC Std - 1m ² @ 8mm	£158.50
108 2700	27kg	MC Deepfill Std - 15-50mm thick	£194.75
372 0599	5kg	MC Primer Std - 10-20m ²	£158.90

MC CSG - For temps. of 0°C and below

MC CSG Code	Unit Size	Description & Coverage	Unit Price
110 1600	16kg	Creutex MC CSG - 1m ² @ 8mm	£168.80
110 2700	27kg	MC Deepfill CSG - 15-50mm thick	£196.74
374 0599	5kg	MC Primer CSG - 10-20m ²	£172.90



Foam Backing Rod

Compressible foam joint packing strip

Ideal for expansion joints that are deep and therefore requiring excessive amounts of jointing compounds in order to fill the joint. The Foam Backing Rod is used to bridge the gap, minimising the amount of jointing material required. Please note, a minimum depth of 10mm should be allowed above the foam backing rod.

Foam Rod Code	Description	Price per roll	
		5m	10m
150 1500	15mm diameter	£7.15	£11.35
150 2000	20mm diameter	£7.90	£12.75
150 3000	30mm diameter	£8.65	£14.55



All prices exclude delivery & VAT



Ideal for
vertical/
overhead
repairs

Cretex LM Order Code	Unit Size	Approx. Coverage @ 5mm thick	Unit Price
107 0900	9kg	1.4m ²	£84.50
107 1800	18kg	2.8m ²	£158.75
107 1100	1L	LM Primer (Covers 5m ²)	£31.93

Cretex® LM

Lightweight mortar for vertical and overhead repairs

- Non-slump formulation
- Impervious finish
- Protects exposed reinforcing steelwork
- Good protection against atmospheric pollutants
- **May be applied up to 75mm thick per layer**

A cement polymer and fibre modified powder mix utilising specialist lightweight fillers.

Cretex LM is the ideal product for both vertical and overhead repairs due to powerful plasticising agents that produce a workable mortar with an extremely low water content.

Capable of being applied with a smooth finish, the placed product will give protection to exposed reinforcing steelwork to prevent further deterioration.

Cretex LM is chlorine-free and has good freeze-thaw stability. Its low absorption to liquids also provides protection against atmospheric pollutants.



Fast repair
for deeper
holes

Cretex Deepfill™

For the larger holes that need to be filled quickly, minimising downtime

- Easy to use, non-toxic or taint
- Suitable for internal or external repairs
- Smooth or slip-resistant finish
- Ideal for repairs 10mm-50mm deep
- Over 50mm, apply in layers

Deepfill™ has been formulated as a fast-curing high strength floor repair that fills quickly and easily. Designed specifically for the deeper holes of 10-50mm.

Cretex Deepfill will withstand heavy traffic in only 3 hours and is a rapid solution for both internal and external repairs.

Compressive strength: 6hrs – 35N/mm²
24hrs – 55N/mm²
28 days – 75N/mm²

Cretex Deepfill	Unit Size	Coverage per Unit	Unit Price		
			1-4	5-9	10+
103 2500	25kg	1.15m ² @ 10mm	£128.75	£122.80	£118.60

All prices exclude delivery & VAT



Easi-Screed® Industrial **Self-levelling industrial floor screed system**

The problems caused by rough, uneven surfaces are known only too well along with the difficulties/downtime needed to provide a smooth, easy to use floor.

Easi-Screed Industrial is THE professional answer. Due to its incredible strength (over 40N/mm²) and its fast curing (drive on time of only 24 hrs) and the fact that we can lay as much as 2000 sq.m. in only one day has resulted in this product being proven worldwide!

Easi-Screed Industrial has been made so easy to use and most companies now prefer completing the work themselves to save a lot of time, money and effort.

- Extremely tough and abrasion resistant
- 40N/mm² compressive strength
- Skid-resistant finish
- **Fast curing: foot traffic – 3 hours**
Vehicular traffic – 24 hours
- Excellent for smoothing out worn or ridged concrete, old or new
- Non-dusting surface
- 5mm minimum application thickness
- Suitable for pumped or hand-mixed applications
- May be overcoated with Polycote *Flortex SG* or Polycote *WD Primer* after only 24 hours
- Ring NOW for fast, professional advice.

Easi-Screed Industrial	Unit Size	Description	Coverage	Unit Price					
				1-4	5-9	10-19	20-49	50-99	100+
124 2600	20kg	Easi-Screed Industrial	1.6m ² @ 7mm thick	£44.65	£42.85	£40.60	£38.40	£36.75	£34.90
122 0500	5L	Easi-Screed Primer	100m ²	£69.80	£66.75	£62.90	£58.80	50+ units - £56.50 each	

All prices exclude delivery & VAT



Ideal for use
over underfloor
heating

Easi-Screed® Flexible

Highly flexible, easy-to-use, self-levelling floor screed

Easi-Screed Flexible is one of our latest formulations. It has been designed using the highest quality raw materials, for floors that are subject to movement, vibration or where underfloor heating is used.

It is extremely easy to apply, after simply mixing with water, and can be laid from as little as 2mm thick, or up to as much as 50mm thick.

The fibre reinforced, protein-free design is highly flexible yet cures to 34N/mm².

- Designed for heavy domestic or light industrial use
- Ideal for use over underfloor heating
- Can be laid from 2-50mm thick
- Very easy to use
- Fast curing: accepts foot traffic after 2-3 hours

Typical Uses: Due to its flexible nature it is ideal for floors with underfloor heating or floors made from timber boards, ply and chipboard.

Easi-Screed Flexible can also be laid over concrete, asphalt, bitumen, ceramic tiles and anhydrite/gypsum screeds and vinyl.

Easi-Screed Flexible	Unit Size	Description	Approximate Coverage	Unit Price					
				1-4	5-9	10-19	20-49	50-99	100+
123 0500	20kg	Easi-Screed Flexible	4m ² @ 3mm thick	£42.80	£40.40	£38.10	£36.60	£34.85	£32.60
122 0500	5L	Easi-Screed Primer	100m ²	£69.80	£66.75	£62.90	£58.80	50+ units - £56.50 each	

All prices exclude delivery & VAT



Easi-Screed® Standard

Self-levelling cementitious floor screed system

- Cures to a strong 36N/mm²
- Self-levelling screed producing a smooth, dust-free finish
- Excellent for smoothing out worn or ridged (old or new) concrete
- Ideal for all domestic/commercial areas
- Accepts foot traffic in only 3-4 hrs
- Allow 12-24 hrs to cure before covering with carpets, tiles or paint
- May be applied from 2-20mm thick in one layer
- Very easy application that requires no expensive professional labour

Easi-Screed Standard has been formulated to answer many requests for a commercial grade, light industrial or heavy domestic self-levelling screed. It has an extremely fast cure accepting foot traffic after 3-4 hrs and overlayers/carpet after only 12-24 hrs.

Easi-Screed Standard can be laid from only 2mm-20mm thick in a single layer, has excellent adhesion and is non-toxic and non-taint. Should it be applied in industrial application, we strongly advise it is coated with an epoxy such as Flortex SG or Flortex Professional to provide an impervious, hard-wearing surface.

Easi-Screed Standard	Unit Size	Description	Approximate Coverage	Unit Price					
				1-4	5-9	10-19	20-49	50-99	100+
117 2600	20kg	Easi-Screed Standard	4m ² @ 3mm thick	£38.75	£36.75	£34.75	£32.80	£30.90	£28.55
122 0500	5L	Easi-Screed Primer	100m ²	£69.80	£66.75	£62.90	£58.80	50+ units - £56.50 each	

All prices exclude delivery & VAT



Easi-Screed® External **For all external self-levelling requirements**

Easi-Screed External is a highly specialised self-levelling concrete resurfacer designed to cope with the stresses caused by expansion and contraction hot or cold, wet or dry conditions.

Easily mixed and poured in one layer it provides an extremely strong wearing surface.

Please note: Standard cementitious self-levelling screeds are NOT suitable for external use.

***Easi-Screed External* has been proven worldwide as THE professional answer.**

- All the features and benefits of *Easi-Screed Industrial* as shown on page 19 but with the ability to withstand harsh weathering from external conditions
- No priming necessary
- Withstands heavy traffic
- 6mm minimum application thickness
- Excellent for smoothing out worn, ridged or pitted concrete

Easi-Screed External	Unit Size	Description	Approximate Coverage	Unit Price					
				1-4	5-9	10-19	20-49	50-99	100+
125 2600	20kg	Easi-Screed External	1.6m² @ 7mm thick	£44.80	£42.40	£40.10	£38.60	£36.85	£34.60

All prices exclude delivery & VAT



5 standard colours available

05	02	55	60	13
Grey	White	Terracotta	Green	Black

Cemcoat™ **A fast-curing, cementitious coating with excellent slip resistance**

- Worn/Frost damaged areas
- Spalling (old) concrete
- Prevents further erosion caused by weathering
- Seals porous surfaces
- Flexible and impact resistant
- Will adhere to damp surfaces
- Available in smooth or slip-resistant finishes

Cemcoat is the answer for worn or frost damaged areas. Applied by brush, roller or squeegee this tough, flexible cementitious coating will smooth out poor surfaces.

Cemcoat will adhere to most surfaces including concrete, tarmac, wood, metal, plastic, galvanised metal, iron, fibreglass, asbestos, PU foam, etc, etc.

Cemcoat can be laid smooth or with a slip-resistant finish which provides a better grip on surfaces such as ramps, wooden walkways and decking, temporary areas, parking bays, driveways, etc.

This is a fast-curing product with a walk-on/re-coat time of only 4-6 hours depending upon temperature and will adhere to damp surfaces.

We also advise a sealer coat to maintain colour and decorative finish, please ask.



Cemcoat	Order Code	Unit Size	Coverage	Unit Price
Smooth	127 55 + col ref.	19.2kg	9 sq.m	£94.50
Textured	127 65 + col ref.	19.2kg	9 sq.m	£94.50
Cemcoat Sealer	127 05 + col ref.	1.7kg	6-9 sq.m	£42.95

All prices exclude delivery & VAT



Vacuum Assisted Shot Blasting

A dust-free, professional preparation of all floors to provide the best possible key for all floor coatings and screeds

- Strips coatings fast
- Removes contamination and surface laitance
- Extremely fast, meaning less downtime and reduced aggravation
- Virtually dust free
- Extremely effective operation
- Ideal for large areas
- Removes loose, flaking and weak surfaces

Minimal dust operation enables the machines to be used in almost an environment including food production and pharmaceutical areas.

A screed or coating is only as good as the substrate it is laid on, meaning that good penetration is absolutely essential for success. Poor surface preparation will almost certainly result in failure – due to the de-bonding of the existing surface!

Shot blasting is THE professional method of preparing substrates prior to the application of both coatings and screeds. Not only does it remove any 'old' coatings or other loose and friable material, but it will also create a 'key' on the substrate and will hugely improve the bonding properties of the new coating or screed.

Shot blasting is extremely quick, environmentally friendly and virtually dust free. It works by blasting steel shot (small steel balls) at the floor, which break up any loose material. The machine then sucks everything (dust and shot) back up into the machine where the shot and dust are separated with an electromagnet. The steel shot is then returned to the firing wheel for re-use and the dust sucked away to a separate vacuum.

**Polycote
Installation
team**

**For a quote or free site
visit, call our team on
01234 943940**



All prices exclude delivery & VAT

STR Floor Scarifier



All consumables are available for sale or hire.
Wear charges will be extra to prices shown.

To remove paint, compacted residues and grease. Depending upon floor treatment required this machine can be easily fitted with numerous discs for scarifying, grinding and cleaning of the substrate.

STR Scarifier	Order Code	Weekend	Weekly
STR Only	201 0010	£178.00	£220
Dust Cowl	201 0011	-	£42.96

Dust Cowl for use with Vacuum (see page 26-33)

PCD SHOES

Use with drive board for removal of sticky/rubbery materials from uneven hard surfaces.

Order Code: 200 1001
Wear Charge: £78 per mm



HTC SHOES

For heavy stock removal from hard surfaces.

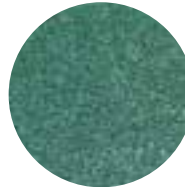
Order Code: 200 1004
Wear Charge: £78 per mm



ABRASIVE DISCS

Use with rubber backing disc for the keying of sound existing epoxy or painted surfaces. 36 grit.

Order Code: 200 1022
Each: £13.90



TCT COPPER PLATE

For removal of lumps and deposits and to key sound surfaces prior to coating – medium grit.

Order Code: 200 1006
Each: £125.70



DFG 700

Triple-headed high-speed grinder with heavy-duty 10" grinding plates

The DFG 700 has been developed for removal of heavy deposits and surface delamination.

The heavy-duty 10" plates, multi-directional and flexible couplings and a quick-release drive plate system all enable this machine to achieve a fast and effective preparation over large areas.

Please ring with individual requirements for a FREE no obligation quotation.

All prices exclude delivery & VAT

Vacuum assistance means 95% dust free



Hand Held Diamond Grinder

For the effective and easy hand removal of paints and adhesives from concrete and screeds, to key the substrate suitable for coatings.

Widely used for all edge work after shot blasting.

An optional dust extraction vacuum can be attached to the grinder thereby removing up to 95% of dust during the operation.

Diamond Grinder	Order Code	Additional Days	Weekly
Grinder	201 0002	£18	£69

Turbo Disc

For the fast and effective removal of heavy coatings and laitance. Also ideal for the smoothing of rough concrete substrates.

Please note: These discs are professional discs with 10mm of diamonds as opposed to standard DIY discs with only 5mm.



Order Code	Turbo Disc	Unit Price
200 0104	Wear Charge per mm (Hire)	£16.98
200 0102	Disc (Purchase)	£114.50

Hire Accessories **Full range of high-quality accessories**



Vacuum

- Easily portable
- Top-quality filtration units
- Supplied with 10m hose
- 95% dust free
- 3 power settings
- Extremely powerful

Leads

- 16 & 32 amp

Transformers

- 16 & 32 amp

Order Code	Product	Weekend	Weekly
201 0030	Heavy-Duty Vacuum	£123.20	£149.00
200 3019	Wand for Vacuum	-	£18.73
200 1015	Transformer - 32 amp	-	£28.95
200 1013	Leads - 32mp	-	£16.75

All prices exclude delivery & VAT

Etch IT Acid-based etching solution for surface preparation

- Ideal where shot blasting is impractical
- Etches almost any surface

Designed to clean and etch floors and walls prior to coating or repairing. *Etch IT* removes laitance (weak dusty concrete surfaces) and provides a key to very smooth surfaces, maximising the adherence of paint and other coatings. May be applied to concrete, quarry and ceramic tiles, terrazzo, brick and metal.

Etch IT Order Code	Unit Size	Coverage per Unit	Unit Price
250 0500	5 Litre	45-60m ²	£39.80
250 1000	10 Litre	90-120m ²	£69.90
250 2500	25 litre	225-300m ²	£141.80



Degrease IT Powerful degreaser for surface preparation

- Concentrated formula, dilute with water
- Ideal for many other degreasing jobs

No paint adheres to oily or greasy surfaces! ***Degrease IT*** is ideal for the removal of heavy grease, oils and fats from floor and wall surfaces prior to applying paint or other coatings. May be applied to concrete, quarry and ceramic tiles, terrazzo, vinyl and most other hard surfaces.

Degrease IT Order Code	Unit Size	Coverage per Unit	Unit Price
254 0500	5 Litre	45-60m ²	£40.55
254 1000	10 Litre	90-120m ²	£69.80
254 2500	25 litre	225-300m ²	£138.80



HD Cleaner Industrial floor cleaning solution

- Concentrated formula may be diluted up to 1:100
- Naturally derived citrus solvent
- Safe for user and the environment
- Ideal for use in food areas
- Excellent for regular maintenance routines

The very latest breakthrough in cleaning technology, *HD Cleaner's* new formulation is even more powerful. Rapidly removes dirt, grime, diesel, engineering and food oil, fat and grease, tobacco film and even rubber marks.

HD Cleaner Order Code	Unit Size	Coverage per Unit	Unit Price
260 0500	5 Litre	45-60m ²	£44.90
260 2500	25 litre	225-300m ²	£149.90



All prices exclude delivery & VAT

Flexiblade

A tough, soft bladed foam rubber.

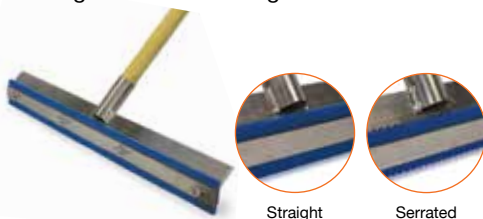
Excellent for the fast application of all Polycote floor coatings.



Flexiblade	Size	Price
236 0600	18" Wide	£19.80
236 0800	22" Wide	£24.80
236 1000	30" Wide	£32.80

Professional Squeegees

For the easy spreading of resin floor coatings and self-levelling screeds.



Straight	Size	Price	Serrated	Size	Price
236 0300	24"	£48.75	236 0501	24"	£48.85

Spiked Roller and Splash Guard

For removal of air bubbles from cementitious and epoxy floor coatings and self-level screeds. Highly effective splash guard also included.



Spiked Roller	Size	Price
240 0199	10" Wide	£48.95
240 0218	18" Wide	£94.80

Spiked Shoes

For walking over wet coatings and screeds during application. Extremely easy to use, simply fit to your existing shoes.



Spiked Shoes	Size	Price
238 0200	1 Pair	£40.95

Brushes

For application of floor/roof coatings and solvents.

10" Broom

For application of floor/roof coatings over larger areas.



Brushes	Size	Price
228 0300	3"	£3.95
228 0400	4"	£4.95

Broom	Size	Price
230 1000	10"	£8.95

Industrial Pin Leveller

Adjustable pins ensure correct depth of material when spreading self-levelling screeds and coatings.



Pin Lever	Size	Price
237 0200	600mm	£98.45

All prices exclude delivery & VAT

12" & 18" Professional Industrial Roller Kits

Our roller kits with a totally NEW revolutionary quick-release head are proving themselves as a must for the tradesman. Not the cheapest – but easily the best.

Roller Kit includes: 1 x Large scuttle
1 x 1–2 metre telescopic handle
1 x Double-arm frame
2 x 12" sleeves

Full Application Kit includes the above plus
4 x 3" Brushes and 0–15L Mixing Paddle

Container shown: style subject to change



Roller Kit	Size	Price
234 0100	12" Prof. Roller Kit	£69.80
234 0300	12" Sleeve	£9.95
234 1000	12" Full Application Kit	£84.50
234 0500	18" Prof. Roller Kit	£89.90

4" Line Marker Roller

- 4" wide roller
- Easy to use
- Kit includes: Frame + 2 roller sleeves



Line Marker	Items	Price
234 0400	4" Kit	£9.90
234 1400	Extra sleeves	£3.75

Mixing Paddles

- Makes mixing easy
- Simply use with a heavy-duty slow speed drill to ensure thorough mixing of two-part products.

Paddles	Size	Price
224 1500	0–15L	£19.90
224 2500	10–25L	£28.90
224 3500	20–50L	£52.90



All prices exclude delivery & VAT

Easi-fil™ An incredibly strong surface filler



- Fills and smooths out all those unwanted holes, blemishes and cracks
- Extremely fast curing and ready to paint in only 20 minutes
- Fantastic adhesion to almost any substrate – including concrete, brick, wood and metal
- Excellent chemical resistance

Polycote *Easi-fil* is solvent-free, will not shrink and cures harder than concrete. Simply mix what you need and store the rest for another day.

Easi-fil Code	Unit Size	Coverage per Unit	Unit Price
1363501	4kg	1.25m² @2mm	£61.80



**Stops
the dust!**

Flortex® Clearseal **Seals the floor and stops the dust!**

- Solvent-free, non-toxic or taint
- May be applied to damp surfaces
- Very easy application by brush or roller
- Seals porous surfaces such as concrete screeds, tiles and brickwork

Flortex Clearseal is ideal for treatment of dusting concrete floors in factories, warehouses, kitchens, food processing areas, garages, workshops, production and plant areas.

Flortex Clearseal is a clear synthetic resin latex based concrete dustproofers with low viscosity for excellent penetration into the pores of the substrate.

Its single-pack, low odour formulation is very safe and easy to apply and produces a dust-free concrete surface with a subtle sheen.



**NEW
bulk order
discounts**

Typical Uses: Ideal for factory and warehouse floors, kitchens, food processing areas, garages, workshops, production and plant areas.

Flortex Clearseal Unit size	Order Code	Coverage per Unit	Unit Price				
			1-4	5-9	10-19	20-49	50+
5L Unit	331 0599	40-50 sq.m.	£76.80	£73.65	£72.70	£70.80	£68.50
20L Unit	331 2099	160-200 sq.m.	£224.85	£219.25	£212.85	£206.85	£202.25

All prices exclude delivery & VAT

**Penetrates,
hardens and
seals in 1 coat**

Flortex® PU Clear **Ultra-tough clear polyurethane floor sealer**

- Prevents surface dusting
- Penetrates and hardens the concrete
- **Extremely durable and flexible**
- Chemical and abrasion resistant
- Advanced formulation with high solids

Flortex PU is a self-priming single-pack high solids polyurethane floor coating. Its tough clear gloss finish is easy to maintain and provides a seamless oil and chemical resistant barrier, capable of withstanding forklift traffic and hot tyres.

Even though *Flortex® PU Clear* is a high solids polyurethane floor coating, it has fantastic penetrating capabilities into porous and unstable substrates.

If you are suffering with dust and delaminating floors, if they are badly wearing due to high traffic/mechanical damage, *Flortex PU* will really solve the problem.

Flortex PU will not simply peel or wear off the surface! The reason for this is that it will soak well into the substrate and completely lock the pores **providing a tough, seamless, clear gloss finish that can easily withstand heavy traffic.**

Being incredibly abrasion resistant as well as oil and chemical resistant, *Flortex PU* is excellent for areas that need to be kept clean, particularly where the use of mechanical equipment is used to achieve this, including forklifts, bobcats and even JCB buckets!

Should you wish to achieve an even, gloss finish in really poor areas, it is important to note that you may require more than 2 coats.

Typical Uses: *Flortex PU* is ideal for both concrete and wooden surfaces. Typical applications include factory floors, warehouses, grain stores, loading areas and workshops.

Flortex PU Clear Unit size	Order Code	Coverage per Unit	Unit Price				
			1-4	5-9	10-19	20-49	50+
5L Unit	330 0599	25-40 sq.m.	£86.80	£83.40	£80.50	£77.80	£75.50
20L Unit	330 2099	100-160 sq.m.	£289.50	£281.10	£273.00	£265.30	£257.50

All prices exclude delivery & VAT



Flortex® Fastset Clear

Very fast-curing, UV-resistant clear floor sealer

- Hard-wearing and abrasion resistant
- Waterproof and chemical resistant
- UV resistant and non-yellowing
- **Ready for use in 1-3 hours depending upon temperature**
- 1-2 coats. Should a second coat be required this can be applied in only 1-2 hrs after 1st coat

If you need a completely clear, non-yellowing UV resistant coating, *Flortex Fastset Clear* is the answer.

This is a high solids content, twin pack high build clear coating, that is not only incredibly tough, but will ensure a light stable protective seal to your surface.

Flortex Fastset Clear has superb flexibility, making it the ideal choice for timber floors and structures.

Fastset Clear Code	Unit Size	Coverage Per Unit	Unit Price				
			1-4	5-9	10-19	20-49	50+
315 0599	5kg	16-20m ²	£189.90	£186.90	£183.80	£181.00	£179.25



Flortex® Fastset (Coloured)


A fast-curing & very durable floor coating

- Rapid curing in only 2-3 hours
- Cures in temperatures from +5°C to +30°C
- The high solid content of the resin can also ensure a high build finish
- Once cured, *Flortex Fastset* is suitable in temperatures as high as +70°C
- With a very low viscosity (similar to water), this ensures an excellent penetration into the substrate
- Can be applied in high humidity conditions
- No VOCs (volatile organics)
- Stain and chemical resistant
- High abrasion resistance
- Non-yellowing, UV resistant formulation

Did you know that you can now repair, prime, top coat AND be ready for use by heavy traffic in as little as 8 hours – depending of course upon site conditions!

Fastset Colour Code	Unit Size	Coverage Per Unit	Unit Price				
			1-4	5-9	10-19	20-49	50+
315 05 + col ref.	5kg	16-20m ²	£189.90	£186.90	£183.80	£181.00	£179.25

All prices exclude delivery & VAT



Available in
Gloss, Matt
& Satin

Flortex® PU Twin Pack **A twin-pack, highly effective floor sealer**

- Strengthens weak/poor concrete
- Impact and abrasion resistant
- Good chemical resistance
- Extremely easy to clean
- Water vapour permeable
- Will adhere to almost any surface

Flortex PU Twin Pack has been created to provide a totally impervious hard-wearing floor sealer that is available in either a matt, satin or gloss finish.

The polyurethane formulation will adhere to a wide range of substrates and will reduce porosity whilst providing a dustproof surface.

The coating is not only light stable but is also extremely easy to clean.

Typical Uses: Flortex PU Twin Pack is ideal for treatment of dusting concrete floors in factories, warehouses, garages, workshops, production and plant areas.



Flortex PU Twin Pack	Order Code	Unit Size	Coverage	Unit Price				
				1-4	5-9	10-24	25-49	50+
Matt	334 0500	5L	20-25m ²	£129.80	£126.80	£123.75	£120.50	£118.80
Satin	334 1600	5L	25-30m ²	£129.80	£126.80	£123.75	£120.50	£118.80
Gloss	334 0701	5L	30-35m ²	£129.80	£126.80	£123.75	£120.50	£118.80

All prices exclude delivery & VAT



PB Floor Paint **Ultra-tough polyurethane floor paint**

PB Floor Paint is a **fast-drying, easy-to-use single-pack paint** with superb adhesion qualities.

Formulated from the **latest resin technology**, *PB Floor Paint* is **incredibly tough AND flexible**, has superb mechanical and impact resistance, and easily resists foot and truck traffic.

The smooth, semi-gloss finish also combines easy **cleaning with good slip resistance**.

PB Floor Paint is an **extremely cost-effective**, easy to apply paint that may be applied in conjunction with aggregate to create a non-slip coating.

- Single pack, no mixing required
- **Tough yet flexible polyurethane formula**

- Very high opacity and solids content
- Oil and chemical resistant
- Two coats normally required
- Smooth but slip-resistant, semi-gloss finish

Typical applications include warehouses, factories, showrooms, workshops and garages.

After appropriate preparation, *PB Floor Paint* may be applied to old, new and granolithic concrete, and is compatible with most previously coated substrates.

A 3000m² converted aircraft hangar was painted with *PB Floor Paint*. Over 5 years of constant automotive and forklift traffic, it was still in heavy use and it looked almost as good as new!

PB Floor Paint	Order Code	Unit Size	Coverage	Unit Price				
				1-4	5-9	10-19	20-49	50+
Smooth	302 05 + col ref	5kg	30-45m ²	£79.55	£76.45	£73.30	£70.55	£68.50

All prices exclude delivery & VAT

02

01

05

09

13

28

29

43

46

60

77

78

Any colour
made to your
specification
- minimum 30
units

Extremely tough and long lasting

PB Non-Slip **Superb non-slip, single-pack floor paint**

PB Non-Slip incorporates all the benefits of *PB Floor Paint*, but 'goes that extra mile' to make it non-slip. It contains an extremely tough aggregate (normally Guyanese Calcined Bauxite) that will not crush (under normal conditions of use – of course!) and easily able to withstand

extremely heavy wear and tear from foot traffic, pallet trucks and forklifts.

PB Non-Slip is ideal for use on walkways, ramps, steps and other areas where a slip-resistance is required.

PB Floor Paint	Order Code	Unit Size	Coverage	Unit Price				
				1-4	5-9	10-19	20-49	50+
PB Non Slip	304.05 + col ref	7kg	30-40m ²	£88.75	£85.85	£82.80	£79.85	£76.90

All prices exclude delivery & VAT



Typical Uses: The coating is ideal for use in factories, warehouses, workshops, processing plants, show-rooms, retail outlets, veterinary surgeries, hospitals, schools and many other areas.

Excellent for use in medical, animal and food environs.

Flortex SG **Industrial grade hard-wearing epoxy floor coating**

Our Best Ever Formulation is now stronger and more resistant to heavy traffic. With a higher solid content than most of our competitors, Flortex SG can penetrate deep into the substrate and achieve a greater bonding power than ever before!

Curing to a chemical resistant, totally impervious finish, *Flortex SG* is far easier to clean (thereby reducing cleaning times and costs) and offers the best protection from damaging liquids and spills. This latest and extremely strong formulation is virtually solvent free and its fast curing process means a quicker return to work. Less downtime = less aggravation AND less cost!

Flortex SG is a non-toxic, two-part water-dispersed epoxy floor coating with a high solid content. It will provide a **hard-wearing**, easy clean surface with a coloured matt to semi-gloss finish. Its formulation includes quality fillers for good abrasion, **oil and chemical resistance**.

- Excellent adhesion
- Tough and durable, twin pack epoxy
- May be applied to damp surfaces
- Adheres to most surfaces including concrete, stone, wood, metal etc.
- No priming required

Flortex SG	Order Code	Unit Size	Coverage	Unit Price				
				1-4	5-9	10-19	20-49	50+
Smooth Finish	308 05 + col ref.	5kg	30m ²	£118.80	£115.85	£113.30	£109.75	£106.75

All prices exclude delivery & VAT



As low as
£106.75
 per 5kg

13 standard colours. Others available, please ask

02 05 09 13 20 22 29 45 46 60 62 76 77

Flortex SG Non-Slip **Superb slip-resistant epoxy coating**

If you have an area where greater slip resistance will be required, use *Flortex SG Non-Slip*. It will continue to withstand heavy traffic as the standard version does, but it incorporates an extremely tough aggregate.

The aggregate used is one of the strongest materials under diamonds, and is often used on brake testing rollers in MOT bays – it will not crush or wear out!

Flortex SG Non-Slip is **extremely easy to apply**, by simply sprinkling Calcined Bauxite aggregate onto the wet first coat. The normal sprinkling rate can be adjusted to give the desired slip resistance. This also means that selective areas of non-slip treatment can be applied as required. Once dry, it is then overcoated to encapsulate the aggregate and give a **high-quality, completely impervious slip-resistant finish**.

Flortex SG	Order Code	Unit Size	Coverage	Unit Price				
				1-4	5-9	10-19	20-49	50+
Slip Resistant	308 08 + col ref.	7kg	30m ²	£127.75	£124.65	£121.75	£119.60	£117.65

All prices exclude delivery & VAT

Should I use a primer and if so, which one?

It is always a good idea to use a primer regardless of the paint job you are tackling. Primers help the paint to go on uniformly and create a beautiful finished project.

Much will depend on the existing surface that you are painting, the colour of the surface, how dark the paint is that you are applying, and whether or not the surface is porous or has any water, oil or chemical damage.

If you wish to achieve a long term solution to your floor, a primer is a necessity – not optional.

- If you are suffering from oil, chemical contamination or rising damp issues, it is vital you seal the surface with a suitable primer – see *DPM Primer* (page 41) or *OT Primer* (page 39)
- If your surface is particularly soft, porous or unstable, it is important that you use a primer with excellent penetrating and binding properties – see *EP Primer*, *OT Primer* or *WD Primer*
- Should you be applying to impervious or hard surface, you will need a primer with 1st class adhesion promoters – see *WD Primer* below

WD Primer **High adhesion, water-dispersed epoxy primer**

*** OUR BEST FORMULATION EVER ***

Supplied the world over, *WD Primer* has proven itself beyond doubt as one of the best primers on the market. With its excellent penetrating ability, *WD Primer* grips the surface like no other.

We have now completed professional pull off tests when applied to a glazed tile. The primer didn't move from the glazing. The glazing didn't pull off the clay. It was the tile itself that shattered.

- A unique formulation including advanced adhesion promoters, *WD Primer* adheres strongly to quarry and ceramic tiles, metal, concrete and marine ply
- Suitable for damp surfaces
- Our most popular epoxy primer



WD Primer Code	Unit Size	Coverage Per Unit	Unit Price				
			1-4	5-9	10-24	25-49	50+
352 0502	5kg	24-30m ²	£96.90	£92.50	£88.65	£84.40	£81.70

ZP Primer **100% solids, twin pack primer for all metal surfaces**



- Outstanding surface wetting properties
- Very easy to apply
- Ideal for food environments

ZP Primer has been formulated for use on metal surfaces however it will adhere to almost any surface. It is both non toxic and non taint.

ZP Primer Code	Unit Size	Approx Coverage	Unit Price
351 0500	5kg	20-25m ²	£144.50

All prices exclude delivery & VAT

Oil, chemical or grease contamination issues?



OT Primer™ **Oil-tolerant epoxy primer for the total sealing of concrete floors**

The revolutionary *OT Primer* is a rapid curing, twin pack epoxy resin with oil binding properties. It can be applied to oil-soaked concrete floors immediately after simple but thorough cleaning with water.

Having applied the *OT Primer*, the oil becomes locked beneath the surface preparing it for coating.

Amazing Binding Power of OT Primer

A roller sleeve covered with a small amount of *OT Primer* was placed on wet dirt.

The resin penetrated at least 50mm and stuck the dirt completely solid, proving the amazing binding power of *OT Primer* in wet or oily conditions.



OT Primer XFH

A NEW extra fast-curing formulation is now available – allowing not only a faster cure but the ability to cure at lower temperatures of only 5°C.

Typical Uses: *OT Primer* may be applied to dry or damp concrete surfaces impregnated with almost any oil or grease including animal, vegetable or mineral oils.

OT Primer Description	Order Code	Unit Size	Coverage	1-4	5-9	Unit Price 10-24	25-49	50+
Standard	364 0400	4kg	11-16m ²	£118.80	£115.70	£113.60	£110.50	£107.20
Standard	364 0800	8kg	22-32m ²	£194.70	£189.90	£185.60	£181.80	£177.90
Extra Fast Hardener	364 0498	4kg	10-15m ²	£129.50	£127.50	£125.50	£123.85	£121.90
Extra Fast Hardener	364 0898	8kg	20-30m ²	£239.80	£237.80	£235.90	£233.50	£231.80

All prices exclude delivery & VAT



EP Primer **100% solids epoxy primer**

EP Primer is an ultra low viscosity, two-part, 100% solids epoxy formulation providing an extremely tough finish with tenacious bond. This highly specialised low viscosity formulation ensures maximum penetration into porous surfaces that will not only seal and 'lock' the surface but will massively strengthen the substrate itself and help prevent any further deterioration. *EP Primer* also has excellent chemical resistance.

The curing process of *EP Primer* is such that the resin can be applied as thickly as required with no detrimental effect either on the hardness or curing speed. This allows the user to smooth out pitted surfaces and in turn provides a much harder wearing surface. *EP Primer* has one of the best adhesive strengths in its class and is perfect for almost any of our gloss or finish coats.

EP Primer Code	Unit Size	Coverage Per Unit	Unit Price				
			1-4	5-9	10-19	20-49	50+
354 0599	5kg	up to 20m ²	£109.75	£105.75	£101.65	£98.10	£94.60



EP Primer XFH

Low viscosity penetrating primer

- Extra Fast hardening resin formulation
- Suitable for almost any environment

EP Primer XFH has all the capabilities of the *EP Primer* above, but includes an Extra Fast Hardener which enables the product to cure within 4-6 hours. Its fast-curing process will also allow the primer to be overcoated far quicker (depending upon the top coat used) and it is therefore easy to apply the primer in the morning and then to overcoat the same afternoon meaning much less downtime.

Should you use our *Flortex EP XFH* top coat (see page 44), then both coats could be applied in one day and the area back in use the very next day.

The slightly extra cost of the XFH version can be saved over and over again by the simple fact that far less downtime means far less disruption to production!

EP XFH Code	Unit Size	Coverage Per Unit	Unit Price				
			1-4	5-9	10-19	20-49	50+
356 0599	5kg	up to 20m ²	£119.80	£115.80	£111.75	£107.90	£104.80

All prices exclude delivery & VAT



Rising damp issues? Professional Damp Proof Membrane

DPM Primer

Liquid damp proof membrane to stabilise substrate and prevent rising damp

Are you suffering from rising damp? Are you finding that the existing surface – no matter whether it is paint or tiles or even the whole screed – is lifting? Are you finding that you simply cannot get a paint to stay down?

No matter whether it is a warehouse floor that is in use 24 hours a day with heavy traffic or simply a basement in a house, *DPM Primer* is a twin pack, 100% solids epoxy that will provide not only an excellent waterproof barrier, but will easily withstand the heaviest traffic!

The resin includes a specialised water-repellent additive forming a tenacious moisture barrier. *DPM Primer* is ideal for where the damp-proof membrane is either non-existent or defective. It can be applied to old or new concrete, with a moisture content of up to 80% humidity.

DPM Primer XFH

A NEW extra fast-curing formulation is now available – allowing not only a faster cure but the ability to cure at lower temperatures of only 5°C.

Very simply, if it's a damp problem, Polycote DPM Primer is THE answer!

DPM Primer Description	Order Code	Unit Size	Coverage	Unit Price				
				1-4	5-9	10-19	20-49	50+
Standard	360 0500	5kg	15-20m ²	£134.80	£130.90	£128.80	£124.75	£119.80
Extra Fast Hardener	360 0599	5kg	15-20m ²	£163.90	£159.40	£155.90	£151.50	£145.40

All prices exclude delivery & VAT



Flortex® Professional **Exceptionally hard-wearing**

Flortex Professional is a heavy-duty, two-part 100% solids epoxy floor coating incorporating quality high build fillers, providing a totally impervious coloured gloss finish.

With its pure epoxy high build formulation, this makes *Flortex Professional* one of the most durable coatings available, with very high resistance to forklift traffic.

- Exceptionally tough and hard-wearing
- Suitable for the heaviest uses, forklift traffic, etc.
- Abrasion and impact resistant
- High-gloss easy-clean finish

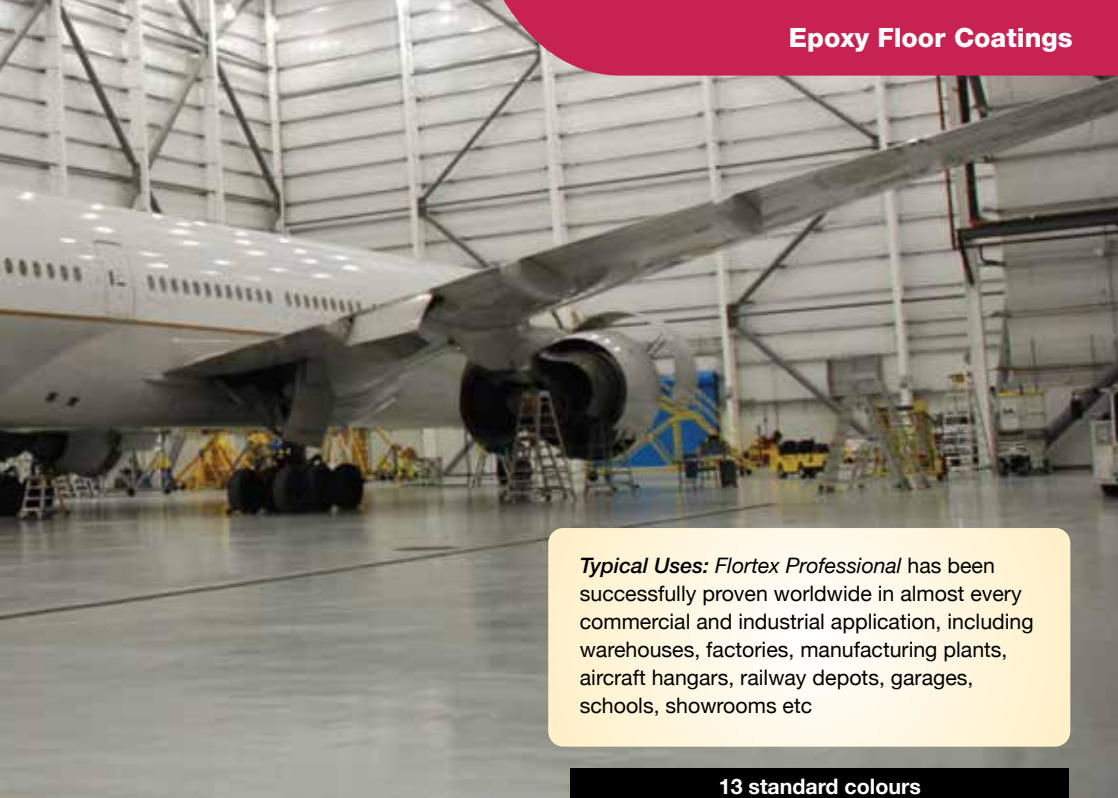
Using our latest technologically advanced epoxy resins, *Flortex Professional* remains the professionals No.1 choice.

Proven in almost every heavy-duty environment, *Flortex Professional* withstands the harshest treatments. One of our customers has a fleet of 70 forklifts, moving 12,000 pallets per night!!

- **100% solids epoxy formulation**
- Excellent chemical resistance
- Suitable for bunded areas, chemical stores, etc.
- A 2-3mm high build finish may be achieved
- For best results a primer may be required

Flortex Professional Description	Order Code	Unit Size	Coverage	Unit Price				
				1-4	5-9	10-19	20-49	50+
Standard	326 08 + colour	7.5kg	15-30m ²	£128.90	£124.90	£120.90	£117.80	£114.90
Standard	326 17 + colour	15kg	30-60m ²	£218.90	£214.90	£210.80	£206.90	£202.50
Slip Resistant	326 10 + colour	9.5kg	15-30m ²	£137.80	£133.70	£129.90	£125.50	£121.00
Slip Resistant	326 21 + colour	19kg	15-30m ²	£234.80	£229.90	£225.75	£221.95	£218.50

All prices exclude delivery & VAT



13 standard colours

02	05	09	13	20	22	29	45	46	60	62	76	77
----	----	----	----	----	----	----	----	----	----	----	----	----

high-build epoxy floor coating



All prices exclude delivery & VAT



13
standard
colours

02

05

09

13

20

22

29

45

46

60

62

76

77

Other colours
available,
please ask

Flortex® EP

Extremely hard-wearing epoxy floor coating

- High-build, totally impervious epoxy
- Highly chemical and abrasion resistant
- *EP Standard* – cures in 12-18 hrs
- 100% solids pure epoxy

Still our best seller, this two-part **100% solids** epoxy resin provides an extremely hard-wearing coating with a totally impervious gloss finish. Its pure epoxy formulation withstands heavy forklift traffic, oil, chemicals and jet washing. Being solvent free and odourless it can be used in food areas.

Typical Uses: Used in all commercial areas, including factories, schools, colleges, warehousing, engineering, commercial food preparation areas and kitchens, laboratories, mechanical areas, showrooms, etc.

Flortex® EP XFH

Extra fast curing, 100% solids epoxy

- Fast curing in only 8-10 hours
- Tough gloss finish
- Reduces downtime & aggravation by at least 50%
- 100% solids pure epoxy

Having incorporated extra fast hardeners into the Flortex EP, this has enabled the resins to cure quicker and harder.

This solvent-free twin-pack epoxy is incredibly strong and is excellent for heavily trafficked floors needing a rapid return to work.

Typical Uses: Used throughout industry for areas requiring a fast return to work: 24/7 environments, hospitals and theatres, schools, manufacturing plants, shipping, rail depots, airports, etc.

Description	Order Code	Unit Size	Coverage	1-4	5-9	10-24	25-49	50+
Flortex EP	312 05 + col ref.	5kg	20m ²	£128.90	£124.40	£120.60	£116.80	£112.80
Flortex EP XFH	313 05 + col ref.	5kg	20m ²	£136.80	£132.88	£128.40	£124.50	£120.80

All prices exclude delivery & VAT

Flortex® Chemical Coat

For the highest chemical resistance

- A two-part, high-build resin coating
- Suitable for chemical bund protection
- Extremely tough general floor/wall coating
- **13 Standard Colours - see Flortex EP on left**

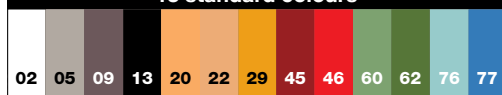
Flortex Chemical Coat has a unique resin formulation incorporating industry-leading chemical-resistant fillers and additives. Its totally impervious gloss finish is extremely hard-wearing and resists heavy traffic, cleaning and jet washing.

We are very different from other suppliers.

Flortex Chemical Coat is manufactured AFTER you have informed us of the chemicals involved. We supply EXACTLY what you NEED.



13 standard colours



Flortex Chemical Coat	Order Code	Unit Size	Coverage	Unit Price				
				1-4	5-9	10-24	25-49	50+
Smooth Finish	318 05 + col ref.	5kg	20m ²	£138.95	£134.18	£130.80	£126.50	£124.50

Flortex® EPS

Fast-curing, solvent-based epoxy coating

A self-priming solvent-based epoxy resin with a hard-wearing and totally impervious surface offering excellent chemical resistance and abrasion.

Ideal for metalwork and concrete, the solvent-based formulation has the advantage of an 18-hour pot life with a rapid cure time of 2-4 hours, allowing for intricate work or several coats in one mix.



6 standard colours. Other colours available, please ask



Flortex EPS	Order Code	Unit Size	Coverage	Unit Price				
				1-4	5-9	10-19	20-49	50+
Smooth Finish	322 05 + col ref.	5kg	30m ²	£169.80	£166.75	£163.58	£160.90	£157.55
Slip Resistant	323 05 + col ref.	7kg	30m ²	£178.80	£175.75	£172.58	£169.90	£166.55

All prices exclude delivery & VAT



Flortex® Mezicoat

A highly durable epoxy for mezzanine/ suspended floors

Due to the very nature of the flooring, typically wooden, metal or even a combination of both, *Mezicoat* easily adheres and remains in a sufficient state to cope with the normal flexing, expansion and contraction expected from these floors.

In response to a high volume of requests, we have produced another flexible coating to easily cope with the 'unique' rigours of suspended flooring.

- Withstands pallet trucks and heavy traffic
- Excellent adhesion to wood and metal
- Totally impervious
- **Chemical and abrasion resistant**
- Provides a satin to gloss finish

13 standard colours												
02	05	09	13	20	22	29	45	46	60	62	76	77

Flortex Mezicoat	Order Code	Unit Size	Coverage	Unit Price				
				1-4	5-9	10-19	20-49	50+
Smooth Finish	353 05 + col ref.	5kg	30-40m ²	£118.90	£114.75	£110.85	£106.92	£102.80
Slip Resistant	353 07 + col ref.	7kg	30m ²	£122.80	£118.75	£114.85	£110.92	£106.80

Non-Slip Aggregate



- Apply a primer or first coat to seal the substrate.
- Scatter aggregate onto the 'wet' primer coat.
- Apply the final coating over the aggregate to seal.

- Typical application rate 4-12m² per/kg
- Specialist food grade (FG60) recommended for easier cleaning in hygiene critical areas

Extremely tough and crush resistant, our *Non-Slip Aggregate* may be sprinkled onto any Polycote floor coating to create a non-slip texture.

Aggregate Order Code	Unit Size	Description	Unit Price	
			1-24kg	25kg+
382 0200	1kg	Fine (0.25-0.5mm)	£2.95	£2.45
382 0500	1kg	Medium (0.5-0.9mm)	£2.95	£2.45
382 0900	1kg	Coarse (0.9-1.4mm)	£2.95	£2.45
384 0200	1kg	FG60 (0.25-0.5mm)	£4.95	£4.15
382 0250	250g	Polymer Bead	£14.95	

All prices exclude delivery & VAT

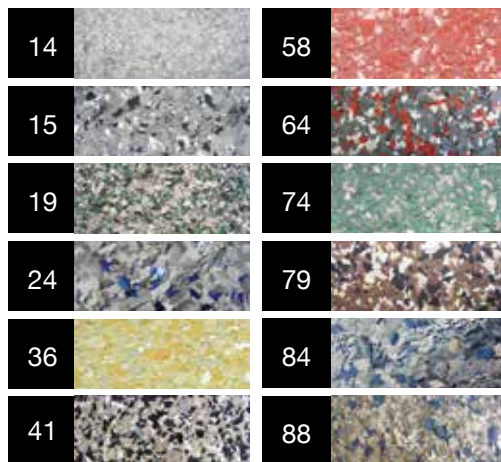


Decratex Flake

A very tough and slip-resistant decorative floor coating


- Seamless and hygienic finish
- Increased slip resistance in wet areas
- Good chemical and stain resistance
- Impact and abrasion resistant
- Easy maintenance

Decratex Flake is an ultra-tough, totally impervious epoxy system. Able to withstand heavy traffic, pressure washing and chemicals, Decratex Flake is a highly versatile, **easy-to-lay** coating. With virtually any combination of colours available, including 'glitter' for clubs, showrooms, etc., Decratex Flake can produce an extremely impressive, granite-like/ mosaic effect that achieves a good slip resistance due to the textured effect of the flakes but also remains easy to clean.



Decratex Flake	Order Code	Coverage	1-4	5-9	Unit Price 10-19	20-49	50+
15m ² Pack	396 80 + col ref.	15m ²	£318.80	£312.75	£303.75	£297.75	£292.50
30m ² Pack	396 81 + col ref.	30m ²	£568.50	£556.60	£544.70	£532.80	£520.90

All prices exclude delivery & VAT



Ultra-tough, 3mm
self-smoothing
epoxy

Flortex® Freeflow

Self-smoothing high build epoxy floor resurfacer

Flortex FreeFlow is THE answer for smoothing out slightly rough surfaces or where there is the occasional pitting. (Standard coatings will not fill pits easily due to the inability to self smooth properly.)

- Uses Polycote's unique FreeFlow™ Resin Technology
- Self-smoothing, 100% solids, solvent free
- Extremely hard-wearing, resists constant heavy traffic
- *Flortex FreeFlow* is extremely long lasting and can withstand years of forklift traffic
- It is totally impervious and is resistant to water, oil and most chemicals
- Coverage shown is relevant when applied to a smooth surface

Using our self-smoothing FreeFlow™ Resin Technology enables the resin to flow and smooth out those annoying dings and bumps.

It is an incredibly strong, solvent-free 100% solids epoxy, non toxic and cures to a gloss finish.

Typical Uses: Excellent for the smoothing out of rough/pitted floors in warehouses, factories, showrooms, workshops and hangers. Withstands heavy traffic and constant use. Totally impervious, oil and chemical resistant. Withstands pressure washing and heavy cleaning routines. Being solvent-free and non-toxic, ideal for use in medical, animal and food areas.

Flortex Freeflow Order Code	Unit Size	Coverage per Unit	Unit Price				
			1-4	5-9	10-19	20-49	50+
328 30 + col ref.	25.6kg	4.2m ² @ 3mm thick	£194.50	£188.20	£181.45	£175.45	£169.50

All prices exclude delivery & VAT



13
standard
colours

02

05

09

13

20

22

29

45

46

60

62

76

77

Other colours
available,
please ask



All prices exclude delivery & VAT



Flortex® PU Screed **A 6-9mm polyurethane floor screed system providing the**

Flortex PU Screed has been professionally developed over the last 18 years to provide the ultimate resistance against relentless chemical attack, impact and abrasion, thermal shock and impermeability.

At almost any temperature from +120°C in bakeries and areas where steam cleaning is a daily activity to cold stores and freezer areas operating at temperatures as cold as -35°C, *Flortex PU Screed* is the ultimate long term solution.

Speed of cure and return to work is another major factor that has ensured our PU Screed to be the choice of almost every working environment.

Depending upon the application temperature the screed will accept foot traffic in 8-12 hours and vehicular traffic after only 36-48 hours.

To ensure complete cleanliness, *Flortex PU Screed* may be trowelled vertically to form coves and skirtings, complimenting the overall finish.

Applied in the same process, our system ensures



Typical Uses: Ideal for food processing plants, engineering, shipping and transportation, pharmaceutical, aerospace, off-shore oil platform and chemical industries.

05

Mid Grey

09

Dark Grey

24

Sandstone

All prices exclude delivery & VAT



long term hygienic solution for the food, chemical & pharmaceutical industries

a seamless finish and not only protects plinths, bases, walls, kerbs, sumps and pits from physical attack, but also ensures a completely impervious to biocidal, microbiological and chemical attack.

Carefully selected aggregates and minerals are blended with our low viscosity resins to uniquely combine both an easy-to-clean and high wear slip resistant surface.

Even as the product begins to wear, the aggregate is present throughout the thickness of the screed

and provides the resistance required throughout the life of the screed.

Polycote UK is an ISO: 9001:2008 accredited company and as with our entire range, Flortex PU Screed is manufactured, to the highest ISO quality standards, as well as the world renowned standards as demanded by Polycote International.

Installed only by our fully trained and highly skilled tradesmen, we offer a nationwide competitive, reliable and professional service.

Ring now for all technical advice AND lowest UK prices

48

Chestnut

62

Dark Green

77

Mid Blue



All prices exclude delivery & VAT



Duralok® Floor Tiles **Incredibly durable 7mm thick PVC**

With virtually NO preparation, NO special skills and NO mess/disruption to business activity, *Duralok* will transform damp, contaminated, damaged floors into clean, modern and attractive areas. With amazing durability, *Duralok* easily withstands some of the heaviest traffic possible.

- **May be laid over damaged or uneven subfloors or flaking paint – no preparation, no adhesive**
- Reduces damage to falling tools and equipment
- Anti-fatigue and insulating properties enhance comfort and productivity
- Protects subfloor against impact and vibration
- Impervious material with excellent resistance to chemicals and solvents
- Dust-free, easy-to-clean surface



Duralok Floor Tiles	Unit Size	Unit Price Per Pack				
		1-4	5-9	10-24	25-49	50+
508 + style + 13 (Black)	2.5m²/pk - (10 tiles/pk)	£98.90	£94.75	£89.90	£84.75	£79.50
508 + style + colour ref	2.5m²/pk - (10 tiles/pk)	£128.50	£124.00	£121.50	£118.50	£115.50

All prices exclude delivery & VAT

As low as
£7.95
per tile

7 colours available

40 13 09 01 29 75 60

interlocking floor tiles, suitable for the heaviest uses

Two Standard Textures

Studded
Style Ref: 11



Available in Black, Blue,
Light Grey, Dark Grey

Hammer Finish
Style Ref: 12



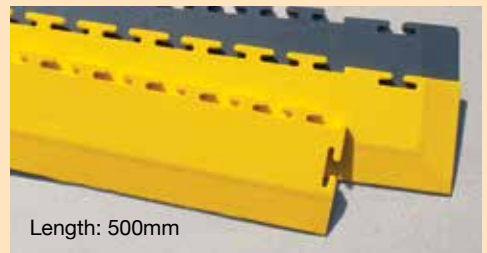
Available in all
the colours

Advantages all the way!

No other flooring system offers so many plus points – a solid 7mm thick flexible PVC floor, quick, clean, easy fitting together with the fact that you can pick it up and take it with you when you move!! Available with ramped edges for extra safety.

Duralok® Ramps

Provides a safe, smooth edge, reducing trip hazards and accidents



Length: 500mm

Attractive, pre-moulded edge ramps and corner pieces making an easy and safe transition in doorways, gangways, around the perimeter, etc.

Order Code	Description	Price
508 21 + col ref.	7mm Ramped Edge	£8.75
508 23 + col ref.	7mm Ramped Edge Corner	£11.95

All prices exclude delivery & VAT



Safety Mat

Low-cost, hard-wearing, easy-clean matting

One of our best-selling slip-resistant floor mats, **Safety Mat** is manufactured from an extremely durable 100% natural rubber.

Supplied as a single mat or in a 10m roll it can be cut and shaped and is extremely easy to lay. Its long length also ensures the number of joins/ potential tripping hazards are kept to a minimum.

Safety Mat is totally waterproof, weather resistant and can be hosed down for easy cleaning.

The fine ribs allow sure footing and the rubber is unaffected by temperature extremes.

Ideal Uses: Aisles and corridors, machine shops, kitchens, shipping, refineries, schools, etc. Another excellent use for this low-cost mat is for tabletops to prevent items slipping and give further protection for delicate items near machines and other areas where objects tend to slide.

Order Code	Mat Thickness	Mat Size	Unit Price
535 3113	3mm	915mm x 10m	£128.90
535 3213	3mm	1220mm x 10m	£168.50
535 6113	6mm	915mm x 10m	£258.65
535 6213	6mm	1220mm x 10m	£344.90

Rubber Crumb Screed

An extremely high-quality flexible floor screed for both children's play areas and equestrian environments.

Rubber Crumb is a contractor applied system producing a flexible and resilient floor, with extremely high impact and vibration resistance. It has been extensively used in veterinary clinics, stables, horse breeding studs, racing yards, zoos, schools and colleges.

- Can be steam cleaned or pressure washed
- Cannot be ingested by animals
- Adheres strongly to concrete, masonry & stone
- Textured or smooth finish
- Waterproof and seamless
- Impermeable and forms a barrier to chemicals
- Kit includes sufficient PU resin binder and rubber crumb for a 15mm Base and 15mm Topping



Order Code	Colour	Kit Coverage	Supply Only Kit Price
518 7513	Black	5 sq.m	£396.90

THIS PRODUCT IS INSTALLED BY APPROVED CONTRACTORS – RING NOW FOR BEST PRICE!

All prices exclude delivery & VAT

**Extra
strong
adhesive**



PVC Floor Marking Tapes

Industrial tape with super strong adhesive

- Pressure-sensitive adhesive
- Easy to lay with tenacious adhesion
- Instantly tough and very long lasting
- Excellent for factories, warehouses, gangways, hospitals and sports halls

The adhesion quality of PVC Marking Tapes is seriously strong and instantly provides long lasting, clean and durable lines. Low cost, quick & easy to lay – meaning much less disruption to the workforce.



PVC Tapes Order Code	Standard Colour Roll Size	Qty	Price 1-5	6-11	12+
430 05 + col ref.	50mm x 33mm	£9.95	£8.95	£7.95	
430 10 + col ref.	100mm x 33mm	£15.95	£14.95	£13.95	

Standard colours available	29	02	13	60	40	75
----------------------------	----	----	----	----	----	----

Order Code	Hazard Colour Roll Size	Qty	Price 1-5	6-11	12+
430 15 + col ref.	50mm x 33mm	£10.95	£10.30	£9.90	
430 20 + col ref.	100mm x 33mm	£16.95	£16.40	£15.95	

Hazard colours available	57	35	73
--------------------------	----	----	----

All prices exclude delivery & VAT



Bolt Down Anti-Slip Plates

Bolt down anti-slip aluminium plates

Our bolt down plates are superb for areas demanding an instant non-slip surface and can be applied to previously untreatable areas, such as sodden timber, railway sleepers, punched steel etc.

Made from weatherproof 1.6mm aluminium these plates are coated with a permanent non-slip surface.

They measure 115mm x 635mm and come with 6 countersunk screw holes for easy installation.



Colour refs

13

29

Bolt Down Plates Order Code	Unit Size	Price		
		1-9	10-19	20+
507 61 + col ref.	115mm x 635mm	£24.80	£23.90	£22.90

Other sizes/colours, please ask our team.



Conformable Tape

Non-slip tape for embossed surfaces

- Superb adhesion to raised surface patterns
- Ideal for chequer plate platforms and stairways
- Apply using rubber mallet
- Extremely tough and long lasting
- Permanent latest formula adhesive
- Suitable for internal and external uses

Conformable Tape Order Code	Roll Size	Unit Price	
		1-5	6+
434 40 + col ref.	50mm x 18.3m	£74.90	£69.75
434 41 + col ref.	100mm x 18.3m	£107.90	£104.81



13

29

HAZARD
35

All prices exclude delivery & VAT



Slip Stop Marking Tapes

Slip-resistant, self-adhesive marking tape

- **Diamond-hard non-slip tape**, including aluminium oxide
- Extremely tough and long lasting
- Permanent, water-resistant adhesive
- Quick instant application

To strengthen the edge, use *Slip Stop Edge Sealer*.
For porous surfaces use *Slip Stop Primer Adhesive*.

Reduce accidents on your stairs, ramps and other slip hazards, instantly and economically! Easily and permanently applied to any smooth or hard surface, with a range of bold colours to compliment, co-ordinate or contrast as required!

Slip Stop Tape Order Code	Standard Colour Roll Size	Unit Price	
		1-5	6+
434 05 + col ref.	50mm x 18.3m	£46.80	£42.95
434 10 + col ref.	100mm x 18.3m	£78.55	£70.94
434 15 + col ref.	150mm x 18.3m	£114.75	£108.85

Stock colours available							
BLACK 13	YELLOW 29	TRANSLUCENT 99	RED 40	WHITE 02	GREEN 60	BLUE 75	HAZARD 35

Order Code	Hazard Colours Roll Size	Unit Price	
		1-5	6+
434 2035	50mm x 18.3m	£49.90	£45.00
434 2135	100mm x 18.3m	£89.40	£78.75
434 2235	150mm x 18.3m	£116.90	£112.55

Slip Stop Tape Primer

On porous, dusty or gritty surfaces we recommend you prime the surface first with *Slip Stop Tape Primer* to seal the surface, prior to application of *Slip Stop Tape*.

Covers approx 5m².

Code	Slip Stop Primer	Price
434 1800	Slip Stop Tape Primer 1 Ltr	£19.90

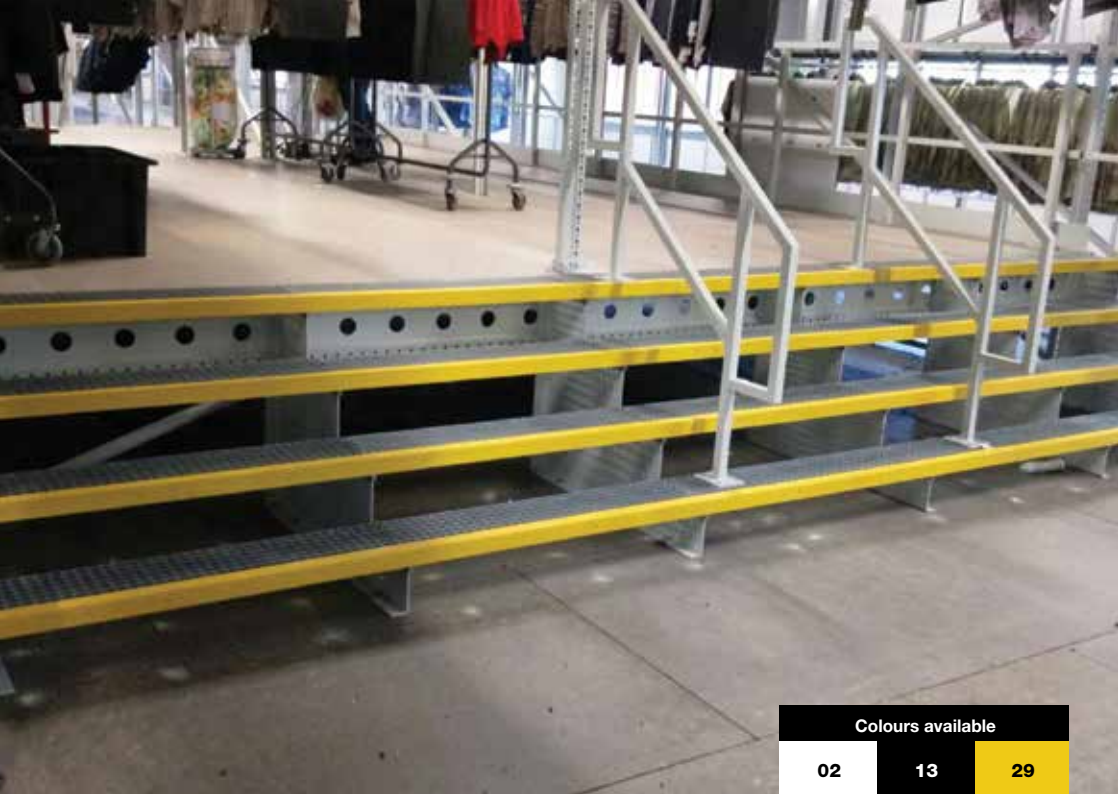
Slip Stop Edge Sealer

Seal and strengthen the edge of your taped areas with our *Slip Stop Tape Edge Sealer*.

Protects against wear and also helps to stop water from penetrating under the tape in wet conditions. Covers approx. 35 linear metres.

Code	Slip Stop Edge Sealer	Price
434 1400	Slip Stop Edge Sealer 140ml	£13.95

All prices exclude delivery & VAT



Colours available

02

13

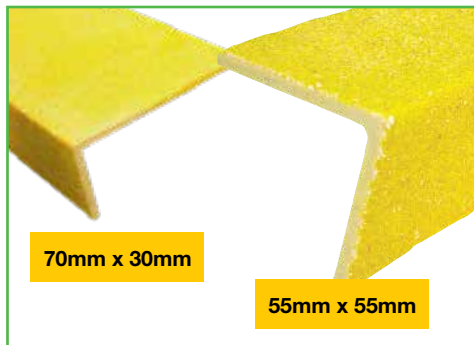
29

Duragrip® GRP Nosings

Gritted non-slip step nosings

A quick and easy way of ensuring your steps and stairs satisfy assessment under the Disability Discrimination Act, DuraGrip Nosings are both highly visible and non-slip for maximum public safety.

- Effective accident prevention at minimal cost
- **Extremely durable and permanent**
- Ultra-tough resin-bonded grit
- Coarse or medium non-slip grades
- Unaffected by temperature variations
- Available in hi-vis yellow or white
- Next-day delivery



Code + Col Ref.				Per Unit Price		
Style 70	Style 55	Grade	Length	1-4	5-9	10+
502 11	502 31	Medium	600mm	£12.80	£11.90	£11.00
502 21	502 41	Coarse	600mm	£12.80	£11.90	£11.00
502 12	502 32	Medium	750mm	£15.90	£14.90	£13.90
502 22	502 42	Coarse	750mm	£15.90	£14.90	£13.90
502 13	502 33	Medium	1000mm	£19.96	£18.95	£17.95
502 23	502 43	Coarse	1000mm	£19.96	£18.95	£17.95
502 14	502 34	Medium	1500mm	£28.90	£27.45	£26.25
502 24	502 44	Coarse	1500mm	£28.90	£27.45	£26.25

All prices exclude delivery & VAT



Duragrip® Stair Treads

Durable non-slip tread surfacing

- Simply screw or glue to surface
- Incredibly tough GRP material

No excuses with *Duragrip*! Its an easy cure for slip hazards on stairs once and for all. *Duragrip* is pre-cut to size, quick and simple to fix, ready for immediate traffic, totally waterproof, chemical resistant and permanent.

PRICES SLASHED to clear a stock of Slight Seconds. Only whilst stocks last so be you'll have to be quick!! Perfectly serviceable. Perfectly adequate.



Order Code	Tread Size (4mm thick) Width x Depth	Unit Price			
		1-4	5-9	10-19	20+
503 1135	600mm x 220mm - Yellow/Black	£28.95	£27.85	£26.75	£25.60
503 1235	750mm x 220mm - Yellow/Black	£36.90	£34.70	£32.50	£30.30
503 1340	1000mm x 345mm - Yellow/Black	£38.95	£36.75	£34.55	£32.50
503 1435	1500mm x 345mm - Yellow/Black	£59.75	£57.35	£55.10	£52.90
503 1535	3000mm x 345mm - Yellow/Black	£119.50	£116.50	£113.60	£111.75

All prices exclude delivery & VAT



Colours available

13

22

29

Duragrip® Sheet **Considerably reduces slips, trips and falls**

- Creates instant slip resistance on walkways, platforms, factory floors, ramps, etc.
- Suitable for pedestrians, vehicles and forklifts
- Can be used instantly after fixing
- Totally weatherproof and chemical resistant
- **Heavy-duty resin bonded grit texture**
- Ideal for use in wet or oily conditions
- Can be pre-cut to size, please ask

- Next-day delivery
- Also available in low profile 1mm thick
- Unmatched impact resistance

PRICES SLASHED to clear a stock of Slight Seconds. Only whilst stocks last so be you'll have to be quick!! Perfectly serviceable. Perfectly adequate.

Order Code	Sheet Size (4mm thick) Length x Width	Unit Price			
		1-4	5-9	10-19	20+
505 4113	600mm x 1200mm	£98.90	£94.40	£90.50	£86.60
505 4213	1200mm x 1200mm	£188.90	£182.90	£176.50	£171.80
505 4313	2400mm x 1200mm	£288.50	£282.50	£277.80	£272.90



Duragrip® Fixing Packs

Coverage: A 6mm x 6mm bead of adhesive will achieve approx 10-11 line. We advise one bead per nosing, two per tread and every 200mm when applying to the sheets.

Product Code	Unit Size	Price
506 5007	Adhesive 380ml	£12.88
506 5099	Stainless Steel Screws Pk of 100	£34.75

All prices exclude delivery & VAT



Totally maintenance free

Superb slip resistance

Colours available		
13	22	29

GRP Deckgrip Wooden decking made safe – instantly and permanently!

Polycote's *GRP Deckgrip* has been professionally designed, to give excellent grip and is formed with chamfered edges to prevent a trip hazard.

Deckgrip can be easily cut to length and is supplied pre-drilled. Fitting could not be easier. Simply screw down onto any suitable surface.

Our *Deckgrip* is also regularly used on concrete and metal as well as wood.

Deckgrip is totally water and weather resistant providing a long term solution to what has, in many cases, been a long term hazard.



Extremely long lasting

Deckgrip Order Code	Size	1-4	5-9	Unit Price 10-19	20-49	50+
520 51 + col ref.	50mm x 1200mm	£14.90	£13.85	£12.95	£12.10	£11.75
520 52 + col ref.	50mm x 2400mm	£27.50	£26.90	£23.85	£22.95	£22.10
520 91 + col ref.	90mm x 1200mm	£21.75	£20.65	£19.95	£19.25	£19.00
520 92 + col ref.	90mm x 2400mm	£40.95	£40.15	£39.75	£39.20	£38.80

All prices exclude delivery & VAT



Pebbletex Transforms driveways, gardens, paths and steps

Attractive, non-slip and durable, Pebbletex is a surface dressing system for car parks, drives and roadways. The decorative natural stone aggregate of your choice is permanently bonded to the surface by an extremely tough polyurethane resin.

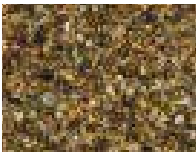
- Rapid curing, resin bonding coat
- Does not allow weed growth
- Safe, skid-resistant finish
- Retains excellent appearance
- Exceptionally hard-wearing
- Easy to apply yourself, with no professional skills



Order Code	Coverage per Pack (based on std aggregate size)	Unit Price				
		1-4	5-9	10-19	20-49	50+
402 12 + col ref.	12m ²	£354.40	£351.80	£348.90	£346.75	£344.40



Amber Flint
Ref: 29



Golden Pea
Ref: 55



Golden Quartz
Ref: 27



Red Granite
Ref: 51



Brittany Bronze
Ref: 26

All prices exclude delivery & VAT



**Contact us
to discuss our
installation
options**

Pebbletex Screed **6-20mm high-strength decorative screed**

Our *Pebbletex Screed* answers our customers requirements for a smooth totally natural stone/ quartz finish.

Pebbletex Screed is trowelled to a smooth finish and laid between 6-20mm thick depending upon the size of aggregate required.

Used externally it is a fantastic alternative to traditional concrete and paving, is oil and chemical resistant and remains weed free.

Using our clear UV stable, non-yellowing resin along with recycled aggregate, Pebbletex Screed provides a contemporary slip-resistant maintenance free finish.

Pebbletex Screed is normally laid onto tarmac or concrete. However, it will also adhere to our geotextile material which can be laid directly onto an MOT or compacted base of sharp sand.

The quick curing time enables the area to be back in use in 4hrs (pedestrian) and 24-48hrs (vehicular traffic) @ 20°C.

Typical Uses: Ideal for kitchens, receptions, showrooms, swimming pool surrounds, driveways, paths, roads, footbridges, ramps and car parks.

Order Code	Pack Size	Unit Price				
		1-4	5-9	10-19	20-49	50+
401 10 + col ref.	12m ²	£198.85	£188.90	£179.50	£173.90	£168.50



Silver Granite
Ref: 04



Classic
Ref: 18



Green Granite
Ref: 65



Devon Yellow
Ref: 06



Salmon Pink
Ref: 53

All prices exclude delivery & VAT



Drive on
time of only
40 mins.

Polycote Slip Grip

Non-slip coating for areas of heavy use and severe slip hazards

- Excellent for use on high wear areas
- Oil and chemical resistant
- Cures in only 40 minutes at 20°C
- Extremely tough and long lasting
- Can be applied down to 0°C – cures in 60 mins

A thickly applied 100% solids resin with tenacious grip. Its coarse anti-slip aggregate provides the top level of slip resistance for areas of severe slip hazards.

Applied as a single coat, which is then completely broadcast with our calcined bauxite for an ultra tough, long-lasting non-slip surface.

Typical Uses: Slip Grip is suitable for any environment requiring a non-slip surface throughout industry and including paths, ramps, roads and runways.

5 standard colours available				
13	09	45	63	78

Slip Grip Standard	Size	Coverage	Price
338 30 + col ref.	30kg	9-15 sq.m	£468.80



SureGrip™ EP

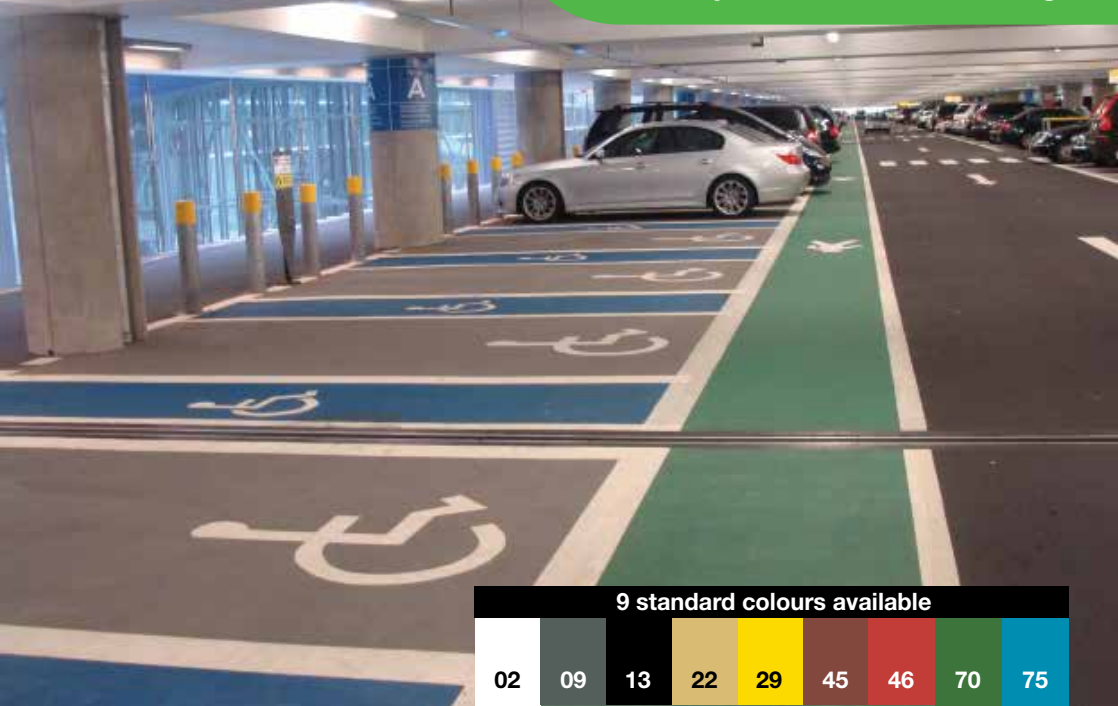
Highly decorative slip-resistant solution

Suregrip EP is another excellent solution to slip hazards and can be applied almost anywhere. It is particularly good on stair nosings, especially where the stair is curved or shaped differently to the standard straight edge.

- Exceedingly tough
- Solvent-free, non-toxic and non-taint
- Rapid curing: 6-8 hours (XFH version)
- Highly chemical resistant

Order Code	Unit Size	Approx Coverage	Unit Price		
			1-4	5-9	10+
438 1200 Std	12.5kg	2.5-5m²	£102.50	£96.80	£90.50
438 1300 XFH	12.5kg	2.5-5m²	£114.50	£109.80	£99.85

All prices exclude delivery & VAT



9 standard colours available								
02	09	13	22	29	45	46	70	75

Quickcoat EP **Ultra fast drying tarmac paint!**

Polycote UK's *Quickcoat EP* is an advanced single pack epoxy using the latest formulation techniques, designed to allow the shortest possible downtime when demarcating car parks, paths and cycleways.

Ideal for marking both disabled and parent & child 'parking bays', to meet new regulations.

- Tack free in only 20 minutes @ 20°C
- **Will withstand heavy traffic as little as 2 hours after application**
- Safe, non-slip textured surface
- Applied by brush, roller or airless spray
- Suitable for tarmac, asphalt or concrete
- Other colours available on request – minimum order quantity 5 x 20kg drums



Quickcoat EP Order Code	Unit Size	Coverage	1-4	5-9	Unit Price 10-19	20-49	50+
407 05 + col ref.	10kg	12-15m ²	£166.50	£162.40	£157.85	£153.70	£149.90
407 20 + col ref.	20kg	24-30m ²	£298.25	£291.18	£284.32	£277.30	£269.20

All prices exclude delivery & VAT



Drive Coat Tough anti-skid acrylic road and path paint

- High-quality water-based acrylic coating
- Tough, rapid curing, long-lasting finish for refurbishing tarmac and concrete
- Slip resistance conforms to BS7044
- Ideal for cycleways and light traffic areas

Give your tarmac or concrete the ‘new’ look.
Drive Coat is a high-quality, water-based acrylic coating providing a tough, long-lasting slip-resistant finish.

Its unique formulation gives excellent UV resistance and non-weathering properties. It will easily cover up stain and drab looking substrates and is extremely easy to apply.

13

40

60

Other colours are available to order subject to minimum quantity

Typical Uses: Transform driveways, cycleways, sports tracks and other off road macadam or concrete surfaces

Order Code	Unit Size	Coverage		Unit Price
		(Roller/Brush)	(Spray)	
408 05 + col ref.	5L	10-15m ²	30-40m ²	£78.90
408 20 + col ref.	20L	40-60m ²	120-160m ²	£219.50



All prices exclude delivery & VAT

Block Seal

Single-pack polyurethane sealer and binder

Block Seal binds the sand and bonds the pavers together, eliminating the problems associated with sand loss caused by vacuum sweepers, jet thrust, pressure washing or flooding.

- Prevents unsightly plant growth
- Totally seals surface and bedding sand against oil contamination
- Unaffected by ice and de-icing salts
- Withstands temperatures in excess of +200°C
- **Top-quality, professional block paving sealer**
- Regularly used in industrial and commercial applications.

Order Code	Unit Size	Coverage per Unit	Unit Price
406 0599	5L	12-15m ²	£76.90
406 2099	20L	50m ²	£269.50



External Floor Paint

Weather and traffic resistant

- Very tough and long lasting
- Single pack: extremely easy to use
- Two coats normally required
- Superb adhesion
- Large range of colours to allow demarcation

External Floor Paint is a high solids content external coating. With an extremely tough yet flexible formulation, it copes well with the wear and tear of industrial yards and is oil and chemical resistant. External Floor Paint is a single-pack product, and is extremely easy to lay. The formulation offers short drying times and excellent adhesion, and it can be supplied as a smooth or slip-resistant version.

Order Code	Finish	Unit Size	Coverage per Unit	Unit Price
403 05 + col ref.	Smooth	5kg	30-40m ²	£84.80
403 07 + col ref.	Slip Resistant	7kg	25-30m ²	£92.90



12 standard colours											
02	01	05	09	13	28	29	43	46	60	77	78

All prices exclude delivery & VAT



Aquaguard SPC

An incredibly tough and flexible waterproof coating

- Formulated for use in long time submersion
- Decorative and long lasting
- Extremely easy to clean
- Ideal for chemically laden environments such as swimming pools and coastal areas
- Blue as standard – others colours, please ask

Aquaguard SPC has been specifically formulated for areas where submersion in water for extended periods of time is required. It provides a highly chemical and water resistant coating with satin finish.

Aquaguard SPC is extremely versatile and may be applied to both floor and wall surfaces and is commonly used in swimming pools, fish ponds, marine industries, coastline areas.

Please note: When applied to bare concrete, the first coat must be thinned with diluting Agent.

Order Code	Pack Size	Coverage per Unit	Unit Price	
			1-4	5+
626 0500	5L	50m ²	£118.90	£115.90
626 2000	20L	200m ²	£389.50	£368.90
626 0100	1L - Diluting Agent -		£19.85	£18.85



Sport Coat

Professional anti-slip coating specially developed for sports pitches

- Spray applied water-based acrylic coating
- Gives a porous and anti-slip surface
- **Tough and long lasting**
- Includes special adhesion promoters for tenacious adhesion to bituminous surfaces
- Contains fungicide and algicide

Sport Coat has been developed in conjunction with specialised sports contractors to meet the specific requirements of tennis and other sports pitches.

Sport Coat retains the porosity needed to allow surface water to be absorbed, where other drainage does not exist.

* Coverage relates to spray applied

11 standard colours available

02 13 29 22 55 56 64 70 72 77 78

Sport Coat Order Code	Unit Size	Coverage	1-4	5-9	10-19	20-49	50+
410 05 + col ref.	5L	*30-40m ²	£74.90	£72.90	£71.00	£68.85	£67.00
410 20 + col ref.	20L	*120-160m ²	£218.75	£214.95	£211.90	£208.95	£205.65

All prices exclude delivery & VAT



Colour codes

02

29

Flexiline (Rolls)

Pre-formed thermoplastic road marking

- For heavy-duty exterior use
- Exceptionally tough and long lasting
- As seen on every road, motorway, etc.
- May be traversed immediately after application

Flexiline is exceptionally long lasting and should be used where permanent lines are required only.

Manufactured from modified BS 3262 thermoplastic, *Flexiline* is a professional road marking system that is quickly and simply heat-applied using a gas torch.

For concrete and block paving – prime with *Flexiline Tack Coat* aerosol before application. One can is normally sufficient for approx. 10 rolls @ 100mm wide.

Flexiline Order Code	Roll Size	Unit Size	Unit Price		
			1-4	2-3	4+
418 05 + col ref.	50mm x 5m	5 Rolls	£89.50	£85.90	£81.85
418 10 + col ref.	100mm x 5m	5 Rolls	£114.95	£109.80	£104.90
418 8099	Flexiline Tack Coat 750ml Aerosol (5m² coverage = approx 10 rolls per can)		£29.95		

Flexiline (Symbols)

Made from the same material as Flexiline rolls, Flexiline letters and symbols comply with the Road and Street Act 1991.

Available in a wide range of sizes and in white or yellow.

Please ring for full price list!



Preformed symbols, etc.	Order Code	Size	Unit Price
Letters and No.s* <small>*(price shown are per price)</small>	418 41 + ref.	150mm	£9.95
	418 43 + ref.	300mm	£12.95
	418 45 + ref.	500mm	£17.95
	418 48 + ref.	1000mm	£31.95
Disable Logo	418 60 + ref.	800mm	£58.95
	418 61 + ref.	1400mm	£74.95
Walking Man	418 64 + ref.	800mm	£58.95
Straight Arrow	418 52 + ref.	2000mm	£48.95
Right/Left Arrow	Please Call	2000mm	£48.95

All prices exclude delivery & VAT



Very fast
curing in only
20 minutes

3 standard colours available

02

29

13

Quickline EP

A fast-curing, single-pack epoxy line marking paint which cures in only 15-20 minutes at 20°C.

Quickline has been specifically designed to adhere to almost any road surface including concrete, tarmac, blacktop, block paving and wood, and is excellent for use on roads, pedestrian crossings, car parks, helipads, runways, as well as general line marking in warehouses and factories.

- Dries in only 20 minutes @ 20°C
 - Will withstand heavy traffic in as little as 2 hours
 - Applied by brush, roller or airless spray
 - Safe, non-slip textured surface also available
 - 5kg unit of *Quickline* will achieve approximately 120 linear metres at 100mm wide.
 - 20kg will achieve 480 lin. metres at 100mm wide
- A minimum thickness of 150 microns is recommended.

Quickline EP Order Code	Unit Size	Coverage	Unit Price				
			1-4	5-9	10-19	20-49	50+
411 05 + col ref.	5g	120 lin.m @ 100mm	£132.40	£128.90	£125.75	£121.95	£118.30
411 20 + col ref.	20kg	480 lin.m @ 100mm	£348.50	£342.60	£338.60	£334.40	£329.60



PU Line Marking Paint

Tough single-pack line marking paint

An extremely easy-to-use, single-pack product that requires no mixing.

- Flexible yet tough polyurethane formula
- Oil and chemical resistant
- Concrete or tarmac surfaces
- Very quick and easy
- Apply two coats

Colours available

02

29

46

60

78

Order Code	Size	Coverage	Unit Price
421 05 + col ref.	5kg	300 lin.m @ 100mm	£89.80

All prices exclude delivery & VAT



EPS Line Marker

Tough and long-lasting coloured epoxy linemarker

- Professional twin pack epoxy
- Hygienic easy clean surface
- Unique formulation
- Cold applied by brush or roller

Standard epoxies have an approximate application time of only 1 hour max. thereby rendering them useless for line marking.

EPS Line Marker has a unique formulation with a working life of 18 hours once mixed together with a fast cure of only 4-6 hours once applied.

2-3 coats if required can easily be achieved from 1 mix even with the cure time in between coats. *EPS Line Marker* far outlasts single-pack paints and self-adhesive floor marking systems, offering excellent resistance to heavy wheeled traffic, forklifts, pallet trucks, cars, aeroplanes, water, oil and chemicals.



Colours available

02

29

Typical Uses: *EPS Line Marker* is excellent for both interior and exterior use and for areas where a heat-applied system is unsuitable. Typical applications include warehouses, factories, airports, loading and parking bays, numerals and colour coding.

EPS Line Marker Order Code	Unit Size	Coverage per Unit	Unit Price				
			1-4	5-9	10-19	20-49	50+
422 05 + col ref.	5kg	300 lin.m @ 100mm	£138.75	£135.85	£131.65	£127.85	£124.45

All prices exclude delivery & VAT



PVC Strip Curtains – Strip Material Only



We can rapidly supply full PVC Curtains to your exact measurements, easily installed and without any need for special tools or contractor costs.

We can also supply just the replacement *PVC Strip* allowing you to use existing hanging plates where possible, helping to keep your costs to a minimum.

Simply let us know the width and height of the opening and we can tell you within 30 seconds the correct size of strip and the quantity required to best suit your needs.

We supply an entire range of PVC to meet almost every need available in either 50m rolls or in individual lengths from 100mm to 2.5m wide strip and from 2mm to 10mm thick.

Should you require a contractor service for the fitting of large doorways or partitions we operate a fast nationwide fitting service. Please ask.

NEXT-DAY DELIVERY NATIONWIDE

PVC STRIP ONLY – 50m Rolls & Cut Lengths

Order Code	Strip Size (mm) Width x Thickness	Roll Length	Full Roll Price	Cut Length Order Price	Cut Length (per m)
780 1299	100 x 2	50m	£104.90	780 1288	£6.90
780 2299	200 x 2	50m	£149.50	780 2288	£7.90
780 3299	300 x 2	50m	£209.80	780 3288	£8.90
780 3399	300 x 3	50m	£297.50	780 3388	£9.90
780 4299	400 x 2.5	50m	£367.90	780 4288	£10.90
780 4499	400 x 4	50m	£469.80	780 4488	£15.55

All prices exclude delivery & VAT



**Fridges &
freezers**



**Shops &
schools**

PVC Strip Curtains – Made to Measure

Our ready-made service offers a wide range of strips cut to three different lengths, 2.1m, 2.5m and 3.1m, supplied with the hanging plates already attached and ready to hang.

Simply screw the relevant hanging rail to the wall, roof beam, door reveal etc. And simply hook on each strip. An entire curtain can be fitted (and removed) in only a few minutes!!

- Dramatically reduces heat loss and noise
- High-quality clear virgin PVC
- Special grades available for cold stores, welding booths including perforated strips, in clear, coloured and photoluminescent. Please ask.

We have now made it even easier for you by holding huge stocks of pre-assembled 200mm x 300mm width *PVC Strip Curtains* so that you can have these hanging up by tomorrow night !!



**With
hanging plates –
ready to hang**

**FOR LOWEST UK PRICES
RING NOW ON 0800 980 0852**

For longer lengths – please ring for immediate quotation

PVC STRIP WITH HANGING PLATES

Order Code	Strip Size	Unit Length	1-9	10-19	20-49	50+
780 2221	200 x 2mm	2.1m	£14.45	£14.15	£13.86	£13.59
780 2225	200 x 2mm	2.5m	£16.80	£16.34	£16.13	£15.82
780 2231	200 x 2mm	3.1m	£19.75	£19.47	£19.28	£18.85
780 3325	300 x 3mm	2.5m	£28.90	£28.46	£28.10	£27.60
780 3331	300 x 3mm	3.1m	£33.70	£33.30	£32.90	£32.50
780 3337	300 x 3mm	3.7m	£38.95	£38.45	£37.95	£37.45

All prices exclude delivery & VAT

**As low as
£14.45
per 2.1m strip**

PVC Strip Curtain, Plate Sets & Rails

A full range of high-quality stainless steel, galvanised, PVC & polycarbonate

Standard Hook-On Rail

This universal rail is used for static curtains of less than a 4m drop, and can either be face fitted (above the reveal) or reveal fitted (within the reveal).



984mm S/S Rail Code	Unit Price
780 5100	£19.50

1230mm S/S Rail Code	Unit Price
780 5200	£26.98

200mm S/S Plate Set	Unit Price
780 6200	£3.00

300mm S/S Plate Set	Unit Price
780 6300	£3.50

400mm S/S Plate Set	Unit Price
780 6400	£4.00

Heavy-Duty Hook-On Rail

This is a heavy-duty suspension system supplied with a cover plate to prevent curtains from unhooking when in constant use by large forklifts.



Cover Plate

Heavy-Duty Rail

Plate Set

Mainly used for the hanging of curtains in doorways of less than 4m drop. Face fit only.

984mm S/S HD Code	Unit Price
780 5300	£34.89

Stainless Steel Plate Sets

See Standard Rail

Heavy-Duty Bolt-On Rail

A premium rated heavy-duty suspension system for large curtains with a drop greater than 4m and/or doorways with constant vehicular traffic.



A universal system that can be face or reveal fitted.

HD Bracket & Bolt - Code	Unit Price
780 5900	£5.85

Aluminium Bolt-on Rail - Code	Price Per M.
780 5700	£26.92

200mm S/S Plate Set	Unit Price
780 6501	£5.55

300mm S/S Plate Set	Unit Price
780 6500	£6.25

400mm S/S Plate Set	Unit Price
780 6540	£6.95

Sliding Track System

A versatile suspension system for the hanging of PVC strip curtains & ideal for the strip curtain needs to be easily moved to one side for accessibility.



Polycote is happy to supply this system either in component form or as a complete kit.

The sliding rail can also be supplied with a braking system to assist the user and for added safety.

Prices on application

All prices exclude delivery & VAT

Brush Strips **Superior brush strips for draught and pest control**

- Conforms to irregular surfaces for total gap fill whilst allowing free door movement
- **Highly effective draught control – 98% seal against airflow**
- Retains warm or chilled air – reducing heating, air conditioning or refrigeration costs
- Permanent insect, rodent and bird prevention – reducing disease, contamination, damage and the need for harmful pesticides
- Reduces dust, fumes and noise, improving the working environment
- Totally weather-resistant, extremely durable and maintenance free
- Very quick and easy to fit with little or no disruption
- Can pay for itself in fuel savings in just one year

To order please quote Style Ref + Size Ref (from table).



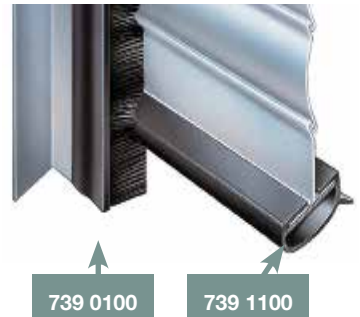
Size Ref	Bristle Length	Brush Thickness	Unit Size	Unit Price
0100	12mm	2.5mm	2m	£21.75
0400	15mm	4.0mm	2m	£24.90
0700	17mm	5.0mm	2m	£28.75
1000	20mm	4.0mm	2m	£26.83
1600	26mm	4.0mm	2m	£28.90
2500	34mm	4.0mm	2m	£31.88
3100	40mm	5.0mm	2m	£41.80
3700	44mm	5.0mm	2m	£44.86
4000	46mm	8.0mm	2m	£65.72
4300	50mm	4.0mm	2m	£41.77
5200	50mm	8.0mm	2m	£69.75
5500	66mm	8.0mm	2m	£74.89
5800	75mm	5.0mm	2m	£54.90
6100	80mm	6.0mm	2m	£71.88
6700	102mm	6.0mm	2m	£72.90

All prices exclude delivery & VAT



Roller Shutter Brushes & Rubber Bump Strips

- Vertical brushes for roller shutter doors
- Easy clip-on fittings with no mechanical fixing
- Prevents drafts and door vibration
- Low friction seal ensures smooth operations
- Rubber Bump Strips to seal gap between bottom of doors and floor



Order Code	Description	Unit Size	Unit Price
739 0100	Roller Shutter Brush	3m	£52.95
739 1100	'D' Section Bump Strip	5m	£102.75
739 1300	Oval Bump Strip	5m	£69.44
739 2500	Aluminium Carrier	3m	£48.72
739 2600	PVC Carrier	3m	£39.75



**New
colour
range**

HyGlaze EP Order Code	Unit Size	Coverage per Unit	Unit Price
634 05 + col ref.	5kg	15-20m ²	£124.50
352 0502	WD Primer	5kg (see page 38)	£96.90

HyGlaze™ EP

High-build pure epoxy wall coating

- Non-toxic or taint, solvent-free
- Suitable for any environment
- Normally applied over *Polycote WD Primer*
- Can be applied up to 400 microns thick
- Extremely hard-wearing, chemical and abrasion resistant

Extremely tough, totally impervious and highly resistant to chemicals and jet washing.

HyGlaze EP is a thixotropic pure epoxy wall coating with a solids content of 97% providing an easy clean coloured gloss finish that will not allow mould or fungal growth.

13 standard colours

02	05	09	13	20	22	29	45	46	60	62	76	77
----	----	----	----	----	----	----	----	----	----	----	----	----

Typical Uses: Used extensively throughout hospitals, hotels, farms, zoos and food factories etc., in kitchens, milking parlours, monkey houses, etc.



HyGlaze Supa-C Order Code	Unit Size	Coverage per Unit	Unit Price
636 05 + col ref.	5kg	15-20m ²	£146.95
352 0502	WD Primer	5kg (see page 38)	£96.90

HyGlaze™ Supa-C

Chemical resistant wall coating

- As chemical resistant as you need it
- Applied by brush or roller
- Totally impervious jet washable coating
- High solid content, thixotropic resin formulation
- Used in conjunction with *WD Primer*, *EP Primer* or *OT Primer*
- 'We Supply What You Need !!'

A thixotropic two-part epoxy wall coating designed for maximum chemical resistance.

HyGlaze Supa-C is a bespoke coating manufactured after you have specified the chemical protection required.

12 standard colours

02	05	09	13	20	22	29	45	46	60	62	76
----	----	----	----	----	----	----	----	----	----	----	----

Typical Uses: Ideal where extra chemical resistance is required such as bunds, chemical plants, liquid processing areas, breweries, oil refineries, etc

All prices exclude delivery & VAT

HyGlaze™WD

Water-dispersed epoxy wall coating

A self-priming water-dispersed epoxy coating with a high solid content, providing a totally sealed, easy cleaned surface resistant to oils and liquids.

The formulation includes high build fillers to increase the film thickness and provide good abrasion and chemical resistance.

- Non-toxic or taint, solvent-free epoxy
- Adheres to damp surfaces
- Resistant to pressure washing
- Does not allow fungus and mould growth
- **Easy application by roller**
- Two coats normally required



13 standard colours												
02	05	09	13	20	22	29	45	46	60	62	76	77

HyGlaze WD Order Code	Unit Size	Coverage per Unit	Unit Price
632 05 + col ref.	5kg	30m ²	£118.50

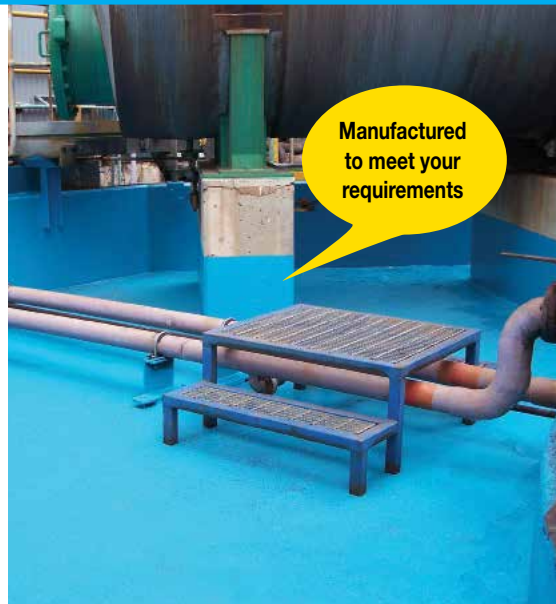
HyGlaze™ Bund Coat

Highly chemical resistant bund coating

A high-build two-part resin wall coating designed for the sealing of chemical bunds and tanks, manufactured to meet the chemical protection required.

- Suitable for brick, concrete and cement render
- Applied by brush or roller
- Totally impervious coating
- High solid content thixotropic resin
- Porous surfaces should be primed with *WD Primer* or *EP Primer CR* – please ask
- Already contaminated surfaces should be primed with *OT Primer* or *DPM Primer* – please ask

13 standard colours												
02	05	09	13	20	22	29	45	46	60	62	76	77



Typical Uses: Ideal where extra chemical resistance is required such as bunds, chemical plants, liquid processing areas, breweries, oil refineries, etc

HyGlaze Bund Coat Order Code	Unit Size	Coverage per Unit	Unit Price
637 05 + col ref.	5kg	15-20m ²	£148.75

All prices exclude delivery & VAT



Panelite™ Wall Cladding

Hygienic interior cladding systems for commercial & industrial uses

- Choice of three wall cladding sheet materials
- Light stable and maintenance free
- **Impact, abrasion and chemical resistance**
- Covers existing surfaces with little or no preparation, providing a top class hygienic system
- Withstands pressure washing
- Minimal disruption with quick & easy installation
- Full backup service from our in-house team

Polycote Hygienic Cladding installations visually transform any building interior into a smart, attractive environment with an atmosphere of efficiency and cleanliness.

Panelite easily eliminates the growth of bacteria and infectious organisms, fully conforming to the most stringent environmental health regulations.

Whatever your building, whatever your business activity, Polycote UK has the right cladding system for you, ensuring cleaning routines are effective, quick and easy.

- GRP Ceiling Tiles and PVC Ceiling Planks also available, to transform your room into a fully compliant hygienic area.
- See Cladding Profiles over page

Typical Uses: Food production areas, breweries, dairies, kitchens, hospitals, laboratories, chillers, restaurants.

Order Code	Description & Size in mm	Unit Price			
		1-9	10-19	20-59	60+
640 1102	Satin PVC - 2.5 x 2440 x 1220mm	£54.50	£50.95	£46.95	£42.75
640 2102	GRP Smooth - 2.4 x 2440 x 1220mm	£128.80	£125.65	£122.85	£119.90
640 2002	GRP Embossed - 2.4 x 2440 x 1220mm	£128.80	£125.65	£122.85	£119.90

All above Wall Panels are also available in 3050 x 1220 mm and other colours - please phone for prices

All prices exclude delivery & VAT

PANELITE™ WALL CLADDING PROFILES

DIVISION BAR - 1 PIECE 'H' SECTION



Covers and seals vertical joints between wall panels of most types, preventing accumulation of dirt and bacteria. Bars allow for thermal expansion and contraction of the sheet material.

DIVISION BAR - 2 PIECE UNIVERSAL



The back of this universal 2 piece is fixed to the wall and panels mounted each side before cover strip is clipped on. This allows for accurate spacing and easy application of silicone bead.

INTERNAL / EXTERNAL ANGLE



Covers and finishes corners where wall panels meet. Ideal for window reveals, doorways and columns. Chamfered edges ensures easy cleaning and maximum hygiene.

INTERNAL CORNER



Creates a hygienic easy-clean one piece cove where wall panels meet at an internal corner. Ideal for food areas and environments where easy cleaning is required

'F' SECTION EXTERNAL CORNER



This section is designed to provide an aesthetically pleasing finish to external corners. Manufactured from highly durable PVC this will also provide excellent impact resistance.

'J' SECTION CAPPING STRIP



For a neat professional finish around terminal edges of wall cladding including top and bottom edge if no coving, ceiling or skirting is used

SCUFF RAILS



Used in food factories, hospitals and other heavy duty areas to protect from the daily knocks and bangs caused from constant trolley traffic and other wheeled instruments.

2 PIECE COVING



Flexible edges for effective seal without the need for silicone (subject to operating conditions). No visible fixings. Choice of solid foam, PVC or aluminium backing profiles.

SKIRTING



UV stabilised PVC skirting with flexible edges for an effective hygienic seal. Screws concealed behind snap-down cover strip. Corners also available.

Prices Per Length 2400mm 3050mm

Product		2400mm	3050mm
Division Bar - 1 Piece 'H' Section		£10.83	£12.77
Division Bar - 2 Piece 'H' Section		£13.95	£14.75
Capping Strip		£8.25	£10.64
Internal Angle Standard	50mm x 50mm	£18.58	£20.66
Internal Angle Heavyweight	25mm x 25mm	£9.98	£12.58
Internal Angle Heavyweight	38mm x 38mm	£19.60	£24.75
Internal Angle Heavyweight	50mm x 50mm	£26.77	£32.62
External Angle Standard	50mm x 50mm	£18.58	£20.66
External Angle Heavyweight	25mm x 25mm	£9.98	£12.58
External Angle Heavyweight	38mm x 38mm	£19.60	-
External Angle Heavyweight	50mm x 50mm	£26.77	£32.62
Internal Corner Section Small		£9.98	£12.58
External Corner 'F' Section		£7.88	£8.94
PVC Coving	4m Long with Std PVC Backing		£26.95
PVC Coving	Internal Corner		£5.85
PVC Coving	External Corner		£5.85
PVC Coving	End Cap (State Left or Right Hand)		£5.30
PVC Scuff Rail	150mm x 20mm x 4000mm		£81.50
PVC Scuff Rail	End Cap		£5.25
PVC Skirting	100mm x 4000mm		£45.66
PVC Skirting	Internal Corner		£7.25
PVC Skirting	External Corner		£7.25
PVC Skirting	End Cap (State Left or Right Hand)		£6.85

All prices exclude delivery & VAT

PANELITE™ WALL CLADDING ADHESIVE / DRIVE RIVETS

PANELITE DRIVE RIVETS



Provide secure mechanical fixing and ideal for flaking surfaces or too uneven for adhesive. Full boxes only.

Code	Size	Box Qty	Box Price
641 1520	20mm	15pk	£3.60
641 1540	40mm	15pk	£4.85

PANELITE FOODSAFE SEALANT



A food-safe sealing compound that is designed to be applied to all joints between wall panels and profiles to ensure a watertight seal. It can be used between the cladding and other-surface.

FS Sealant Order Code	Size	Price Each	12-23	24-47	48+
641 1501	300ml	£14.95	£11.23	£10.75	£10.14
222 0100	300ml	Application Gun	£8.90 each		

SINGLE PACK ADHESIVE



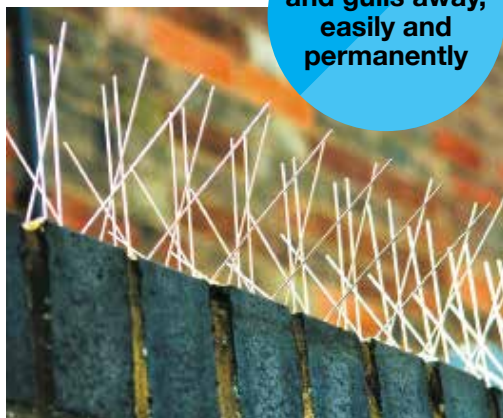
Achieves tenacious bond to sound, flat, dry surfaces. A solvent-free adhesive offering immediate and superb grab, good working time and fast cure. Ideal for a quick and easy installation of our Panelite™ wall panels to virtually any solid surface. Can be applied using an open-barrel bun or a notched trowel. Resistant to freeze/thaw cycles in cold stores, fridges etc.

SP Adhesive Order Code	Size	Price Each	Case of 12	Case of 24	Case of 48
641 1301	600ml	£15.75	£194.95	£389.90	£779.80
641 1400	600ml	Application Gun	£98.50 each		

Bird Spikes

Totally harmless

**Keep pigeons
and gulls away,
easily and
permanently**



- **Extremely durable and long lasting**
- Supplied in 330mm pre-drilled strips for easy screw or glue fixing

Our *Bird Spikes* are made from durable UV stabilised polycarbonate base.

These very effective yet harmless stainless steel spikes put an end to the unsightly and hazardous problem of persistent bird droppings.

Most effective against pigeons, gulls and similar problem birds – simply fix along their favourite perching and roosting places – job done!

Bird Deterrent Order Code	Unit Description	Unit Price		
		1-4m	5-49m	50m+
743 1100	Pigeon	£9.80/m	£9.45/m	£8.95/m
743 1200	Gull	£10.80/m	£10.45/m	£9.95/m
743 1300	Non-Conductive	£11.80/m	£11.00/m	£10.44/m

All prices exclude delivery & VAT

20yr
life expectancy

**Standard
colours available**

10
Winter White

21
Magnolia

20
Cream

90
Champagne

03
Silver Grey

41
Suffolk Pink

Wallflex™ HB **Extremely, durable, acrylic resin masonry coating**

Wallflex HB is a protective and decorative single pack, exterior wall coating. Being 20 times thicker than conventional paint, it is extremely durable and capable of bridging hairline cracks.

Wallflex HB retains the breathability of the substrate and allows the escape of water vapour, whilst providing total protection against wind-driven rain.

Wallflex HB also has anti-carbonation properties, protecting reinforced concrete structures from corrosion of the reinforcing steelwork.

- Environmentally friendly water-based resin
- Protects, insulates and weatherproofs in one coat
- Allows the wall to breathe
- Contains ceramic spheres, increasing the insulative properties of the wall
- Withstands harsh climates and wind driven rain
- 1000's of satisfied customers
- Adheres to virtually any surface including pebbledash, render, brick, block, concrete, etc.

**Far longer-lasting than
conventional masonry paint!**



Typical Uses: Extensively used on industrial, commercial and residential properties where an exceptionally long-lasting maintenance-free painted finish is required.

Wallflex HB Order Code	Unit Size	Coverage per Unit	Unit Price				
			1-4	5-9	10-19	20-49	50+
617 05 + col ref.	5L	10-20 sq.m.	£89.90	£86.50	£83.70	£79.80	£76.90
617 15 + col ref.	15L	30.60 sq.m.	£238.50	£233.90	£228.80	£223.90	£218.50

All prices exclude delivery & VAT

Totally
invisible



Stoneguard™

Invisible masonry waterproofer

- Does not affect look or characteristics of treated surface
- Retains the breathability of construction materials
- Extremely durable and long lasting
- Rapid drying, advanced polymer formulation
- Prevents erosion caused by freeze-thaw cycles

A unique single-pack water-dispersed fluoropolymer based coating that provides an invisible protective barrier against water, oil, pollutants and other contaminants when applied to porous mineral surfaces. **The low viscosity formulation penetrates and seals the substrate with a durable chemical bond, yet is totally invisible and has no effect on the appearance or characteristics of the treated surface.** It does not prevent the escape of water vapour and retains the breathability of the substrate.

Stoneguard Order code	Unit Size	Coverage per Unit	Unit Price
629 0500	5 Litres	70-100m ² (subject to conditions)	£94.50



Graffitiex™

Stop graffiti with our highly effective water-based anti-graffiti coating

Graffitiex is an exceedingly chemical resistant polyurethane coating, specifically formulated to protect building surfaces from graffiti damage. Apply the *Graffitiex* to lock the surface and provide a tough, unconquerable, impervious barrier. When the artists return and leave their mark, *Graffitiex* prevents the impregnation of the graffiti paint into the wall and it can be much more easily wiped off.

- One of the toughest and most graffiti resistant coatings available in the UK
- Graffitiex coverage: 25-40 sq.m. per 5L
- Two coats recommended to create a complete seal and ensure a long-life

Order Code	Unit Size	Description	Unit Price
612 0599	5 Litres	Graffitiex	£124.80

All prices exclude delivery & VAT

Colormet™ Ultra

Rust preventative solvent or water based metal finishes

- **Extremely weather resistant and durable**
- Withstands heat up to 90°C
- May be used indoors or out
- Minimum application temperature 5°C
- Low odour, white spirit dilutable formulation

The ultimate enamel coating for metal, that may be applied directly to rusted surfaces with little preparation and generally no priming.

Colormet Ultra cures very quickly to form an extremely tough, scratch resistant, highly flexible gloss coat.

Both solvent and water-based formulations are available – depending on specific requirements.

Standard colours available

02 05 09 13 29 45 46 62 63 78

Colormet Adhesion Primer

Suitable for galvanised steel, aluminium, stainless steel, zinc, hard PVC. Re-coatable after just 30 minutes.

Adhesion Primer	Order Code	Size	Coverage	Price
Solvent Based	862 4700	750ml	20-25m ²	£53.85

Rustex™

Corrosion-reactive, ultra-tough water-based metal primer/sealer

- **Minimum preparation**
 - **Rapid dry**
 - **Easy application**
 - **Non-flammable, non-toxic**
- Rustex* is a single-pack, water-based high performance primer used for the treatment of rusted steel prior to the application of a suitable top coat. This dual-action formula is designed to penetrate and stabilise corrosion on ferrous metals.

Rustex forms an effective barrier against water and chloride ions, thereby arresting the corrosion process for long-term protection.

Rustex requires minimal preparation, is non-toxic, non-flammable, easy to apply and rapid drying.

Many more colours available



Typical Uses: Ideal for machinery, tank exteriors, racking, metal stairways, railings, street furniture and playground equipment.

Colormet Ultra

Colormet Ultra	Order Code	Size	Coverage	Price
Solvent Based	862 25 + col ref.	2.5L	20-25m ²	£76.90

Colormet Anti-Corrosion Primer (Solvent based)

To be used on extremely rusty metal to maximise rust prevention. Re-coatable after just 2 hours.

Colormet Ultra	Order Code	Size	Coverage	Price
Anti Corrosion	862 3507	2.5L	25-30m ²	£84.50



Order Code	Unit Size	Unit Coverage	Unit Price
860 0100	1 Litre	8m ²	£44.50
860 0500	5 Litres	40m ²	£152.80

All prices exclude delivery & VAT



Aquaguard

An incredibly tough and flexible liquid membrane providing a waterproof barrier

Aquaguard can be applied to almost any masonry material or wood to provide a continuous and impervious waterproof membrane and is suitable for both internal and external applications.

With tenacious adhesion strengths and excellent elasticity, *Aquaguard* has been proven in thousands of locations from basements and cellars to wetrooms and pools, preventing the costly and disruptive migration of water through walls and floors into connecting rooms and is both non toxic and non taint.

Aquaguard is excellent for tanking out internal plant rooms and wetrooms. It will completely waterproof both floor and walls and may be tiled over or covered with timber/laminate flooring as well as screeded or rendered.

Please note the following:

Aquaguard has been professionally formulated to provide a positive pressure waterproof barrier for walls and floors. Positive pressure means that it can be applied to the outside to keep water out or to the inside to keep water in – such as showers and wetrooms. >>

When coating floors, should any hydrostatic water pressure be present, the membrane must be loaded (covered) with a 65mm (min) screed. A vertically applied membrane should be loaded with a 20-40mm sand/cement render. When using as a liquid DPM, the coating must be linked to the DPC.

If you are trying to prevent the ingress of water by the application of an INTERNAL coating, then please use one of our other products more suited to this – Polycote *DPM Primer* on page 41 or Polycote *Aquatex* on page 85.

- Very tough yet highly flexible and elastic
- Excellent resistance to water pressure
- Quick-drying, single-pack liquid membrane
- Low water vapour permeability
- Non toxic, non taint
- Resistant to silage acids
- Excellent stain blocking qualities
- Can be applied dry or damp surfaces

Typical Uses: *Aquaguard* is ideal for the lining and tanking of floors and walls, including basements, to provide a waterproof barrier. Also suitable for use under ceramic tiling and self-smoothing screeds.

Aquaguard Order Code	Unit Size	Coverage per Unit	Unit Price				
			1-4	5-9	10-19	20-49	50+
624 05 + col ref.	5L	9m ²	£78.90	£76.90	£74.80	£72.90	£70.80
624 25 + col ref.	20L	36m ²	£295.90	£287.90	£279.90	£271.80	£266.90

All prices exclude delivery & VAT

Aquatex™

Cement-based waterproof wall coating

- Withstands equivalent of 5m head of negative water pressure
- Quickly and easily applied by brush or spray
- Excellent adhesion
- Two coats recommended
- Supplied in grey

Aquatex is a cementitious waterproofing system consisting of a blend of Portland cements, graded aggregates and chemical modifiers. Mixed simply with water to produce a liquid consistency that **may be applied by brush or spray**. Aquatex has excellent adhesion characteristics even when applied to damp surfaces and the product is approved under the Water Bylaws Scheme.

Typical Uses: Aquatex is used for the tanking of basement and cellar walls to prevent the permeation of groundwater. Used also for sealing tanks and ducts, and is suitable for lining storage tanks for potable water.

Ideal for the tanking of basements, tanks & ducts

Aquatex Order Code	Unit Size	Coverage per Unit	Unit Price				
			1-4	5-9	10-19	20-49	50+
620 2507	25kg	8-12m ²	£88.90	£85.80	£83.90	£82.00	£79.60

Stops water and damp ingress in two easy coats

All prices exclude delivery & VAT

Aquadec™ **A tough, highly flexible 100% waterproof,**



**BEST
SELLER**

Aquadec is a 3-part system comprising of a DPM coat, *Aquadec Top Coat* and finished with a coloured seal coat.

The *Aquadec DPM* is a fast drying, non-toxic or taint primer. Being single pack, it is extremely easy to use and will easily bridge small cracks. It will adhere to almost any surface, with excellent adhesion, even if it's damp and the fast-curing formulation means that the primer is touch dry in approximately 1 hour.

The *Aquadec Top Coat* is a decorative, twin pack, cementitious top coat. It is available in either vehicular or pedestrian grade and can be applied to walls as well as floors. *Aquadec Top Coat* will naturally provide a slip-resistant surface.

**Balconies
& walkways**



6 standard colours available

22	05	02	55	60	13
Buff	Grey	White	Terracotta	Green	Black

Typical Uses: *Aquadec* is commonly used on balconies, car park decks, basements, walkways, abattoirs, silage clamps, grain stores, dairies, piggeries, changing rooms and footpaths

All prices exclude delivery & VAT

slip-resistant finish

- Superb substrate protection qualities
- 100% waterproofing system
- Easily bridges substrate cracks
- Excellent adhesion to almost any surface
- Very hard wearing
- The Aquadec Sealer is recommended if planters or soil borders are present

Aquadec is ideal for:

- Waterproofing balconies - tiled, asphalt, concrete
- Creating a watertight floor covering around swimming pools
- Sealing the surface under tiles
- Tanking of bathrooms / wetrooms
- Can be applied to plasterboard, plywood, brick, concrete, asphalt, fibreglass, etc

Through continued research and listening to customer feedback, Polycote UK has created a waterproofing system that will be the cure to many long standing waterproofing problems, such as balconies, walkways, and car park decks, as well as basements.



Aquadec Usage	Order Code	Coverage per Unit	Unit Price				
			1-4	5-9	10-19	20-49	50+
Pedestrian	627 10 + col ref.	9 sq.m	£279.80	£267.90	£255.80	£244.80	£234.50
Pedestrian	627 20 + col ref.	18 sq.m	£474.80	£462.80	£450.90	£439.80	£429.50
Pedestrian	627 40 + col ref.	36 sq.m	£874.60	£862.70	£850.90	£838.50	£826.80
Vehicular	627 15 + col ref.	9 sq.m	£328.50	£326.95	£314.90	£304.80	£295.90
Vehicular	627 25 + col ref.	18 sq.m	£578.80	£566.75	£554.75	£542.90	£532.80
Vehicular	627 45 + col ref.	36 sq.m	£1077.90	£1059.50	£1039.80	£1027.50	£1018.90
Aquadec Sealer	127 05 + col ref. (1.7kg Unit)	6 - 9 sq.m	£42.95	£41.95	£40.95	£39.90	£38.90



Polydex™ Metal coating with over 200% elasticity

Extremely easy to apply by brush or spray, *Polydex* forms a highly elastic, anti rust membrane which is impermeable to water and highly resistant to weathering, mechanical and chemical attack. Its specialist formulation includes high-quality anti corrosive pigments, achieving a galvanic protection against corrosion.

- Extreme elasticity accommodates expansion without cracking
- Superb, long-lasting rust protection
- Resistant to weathering, chemical and mechanical abrasion
- Impermeable to water
- Unbelievable adhesion prevents water ingress and corrosion even when cut
- **Due to its extreme elasticity (in excess of 200%), Polydex has incredible resistance to cracking and does not peel.**

SCIENTIFICALLY PROVEN BY INDEPENDENT LAB TEST

The unique *Polydex* formulation has been tested the world over and it has proved no different whatever the weather or temperature.

Extreme testing was undertaken by a professional institute and the results were described as '*unsurpassed corrosion control*'.

Prove *Polydex* today... and for years to come.



Polydex

Competition

Polydex High Build Order Code	Unit Size	Coverage per Unit	Unit Price				
			1-4	5-9	10-19	20-49	50+
871 20 + col ref.	5kg	16-20m ²	£79.80	£77.80	£75.90	£72.75	£70.80
871 22 + col ref.	20kg	66-80m ²	£279.55	£273.45	£266.40	£260.05	£257.60

All prices exclude delivery & VAT



Typical Uses: Suitable for both interior and exterior applications. All metal surfaces including roofing, cladding, harbour and offshore decks, structures and cranes, tanks and ducting, cables, nuts and bolts.

6 standard colours available

02	01	05	09	13	44
----	----	----	----	----	----



Wetterflex™ BG Brush Grade flexible roof coating

- Only one coat required
- Adheres to virtually any surface
- UV resistant
- Extremely easy to use
- Long lasting
- Can be applied when you need it most – when it's leaking!

Wetterflex BG is a brush-applied waterproof roof coating consisting of modified bitumens, mineral fillers, water-displacing agent and a specialist polymer.

Wetterflex BG retains its flexibility to achieve exceptional adhesive strength to all roofing materials.

Wetterflex may be applied in dry/wet conditions, during heavy rain or even underwater, and is impermeable to water immediately after application.

Total success – even in the pouring rain!

Typical Uses: *Wetterflex BG* is superb for use as an emergency repair coating due to its unique ability to adhere to virtually any surface, even in the pouring rain.

Primarily designed for use on flat or pitched roofs, *Wetterflex BG* may also be used to repair leaking valley and box-section gutters, glass and fibreglass roof lights and lead/zinc flashings.

Wetterflex BG Order Code	Unit Size	Coverage per Unit	Unit Price				
			1-4	5-9	10-19	20-49	50+
801 0501	5kg	5 sq.m.	£71.50	£69.80	£67.90	£65.80	£63.90
801 2501	25kg	25 sq.m.	£198.80	£194.90	£190.80	£186.50	£181.50

All prices exclude delivery & VAT



Wetterflex™ TG

Trowel Grade roof repair compound

- Gutter joints and flashings
- Asbestos sheets
- Large cracks or holes
- Bad expansion areas

Wetterflex TG is a trowel-applied, very dense solvent-based waterproof roof repair compound consisting of modified bitumen, mineral fillers, fibres, water-displacing agent and a specialist polymer to achieve exceptional adhesive strength to all roofing materials.

It may be applied in dry or wet conditions, during heavy rain or even underwater, and is impermeable to water immediately after application.

Typical Uses: *Wetterflex TG* is used for filling wider joints, cracks and holes, prior to the application of other brush applied coatings. *Wetterflex TG* is ideal for use as an emergency compound coating due to its unique ability to adhere when applied to a wide variety of substrates, in the pouring rain, even underwater.

Wetterflex TG Order Code	Unit Size	Unit Price
802 0501	5kg	£79.80
802 2501	25kg	£228.80

Flexible Membrane Reinforces all roof coatings



- Superb reinforcing properties
- Easily cut to size
- Compatible with all Polycote roof coatings

When roof coatings are applied across joints or angles where movement or tension can occur, the coating should be reinforced with *Polycote Flexible Membrane*. This adds immense strength and prevents cracking of the coating.

Membrane Order Code	Unit Size	Unit Price
815 0400	4 sq.m.	£19.85
815 0800	8 sq.m.	£36.90
815 5000	50 sq.m.	£175.80



Poloflex Premier Grade **Highly advanced butyl rubber roof coating**

- **Waterproofs almost any surface immediately after application**
- Remains tough and flexible
- Withstands pedestrian traffic
- Excellent adhesion and very long lasting
- Specialist formulation for extra flexibility
- Can be applied to almost any substrate

Poloflex Premier Grade will seal and waterproof almost any flat or pitched surface and is sufficiently durable to withstand occasional foot traffic. Its specialist formulation incorporates butyl rubber to achieve extra flexibility and strength.

Poloflex is waterproof immediately after application and may be applied to almost any substrate including felt, asphalt, concrete, asbestos & wood.

Poloflex PG Order Code	Unit Size	Coverage per Unit	Unit Price				
			1-4	5-9	10-19	20-49	50+
810 2500	25L	25 sq.m.	£229.80	£224.80	£220.75	£216.90	£212.50

Tools Available **Perfect for the application of all roofing products**



Order Code	Unit Size	Unit Price
228 0400	4-Inch Brush	£4.95
230 1000	10-Inch Broom	£8.95
216 0700	7-Inch Trowel	£10.85

All prices exclude delivery & VAT

Reflects up
to 80% of solar
radiation

Proven in the extremes of the Caribbean climate

Solarflex™ Premier Grade **Solar reflective coating with aluminium flake**

A superb, thick and flexible roof coating that completely waterproofs and solar-reflects in only one coat.

Solarflex Premier Grade is a specialist formulation incorporating butyl rubber for extra flexibility and strength, together with a high percentage of aluminium flake.

This gives *Solarflex* its incredible heat reflecting

properties, ensuring an extremely effective barrier against moisture, UV light and interior heat gain.

- Reflects 80% solar radiation
- Reduces interior temperatures by 15 – 20%
- The aluminium flake rises to the surface and reduces interior heat loss during winter.
- Waterproof immediately after application

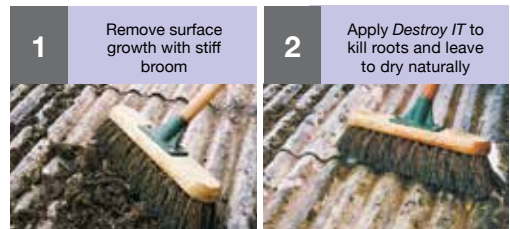
Solarflex PG Order Code	Unit Size	Coverage per Unit	Unit Price				
			1-4	5-9	10-19	20-49	50+
821 2501	25L	25m ²	£245.75	£238.90	£232.70	£225.80	£219.90

Destroy IT **Fungicidal wash solution for the effective killing of root growth**

Put an end to fungal growth with *Destroy IT*! *Destroy IT* is a fungicidal solution that will eliminate fungal or organic growth.

- Used on roofs, walls, ceilings, concrete, brickwork, driveways, etc.

Destroy IT Order Code	Unit Size	Coverage per Unit	Unit Price
829 0500	5 Litres	Approx. 50m ²	£58.70
829 2500	25 Litres	Approx. 250m ²	£148.50





Typical Uses: *Acrافlex Standard* is suitable for both flat and pitched roofs. Superb adhesion to most surfaces: felt, asphalt, asbestos, metal, concrete, brickwork and slate.

Acrافlex High Build should be used for heavier repairs as it has a thicker consistency than *Acrافlex Standard*.

Acrافlex™ **Fibre-reinforced solvent-based acrylic waterproof roof coating**

Acrافlex is a high-quality solvent-based acrylic waterproofing compound incorporating fibres that interlace to reinforce the coating.

Acrافlex provides a single-coat, durable, long-term waterproofing solution that is immediately waterproof after application and will withstand rainfall as soon as it is applied.

Acrافlex High Build has a thicker consistency than *Acrافlex Standard* providing greater flexibility.

- For porous surfaces, use *Acrافlex Primer*
- **Highly UV resistant**
- Will far outlast bituminous coatings
- Cracks and joints should be reinforced with Polycote Flexible Membrane (see page 91)

Unit Size	Order Code	Coverage per Unit	Unit Price				
			1-4	5-9	10-19	20-49	50+
5kg Standard	830 05 + col ref.	5m ²	£74.60	£73.50	£71.50	£70.40	£68.60
20kg Standard	830 20 + col ref.	20m ²	£209.75	£203.70	£198.85	£192.75	£187.85
5kg High Build	830 16 + col ref.	4-5m ²	£79.75	£77.75	£75.95	£74.05	£72.15
20kg High Build	830 22 + col ref.	16-20m ²	£228.90	£222.95	£217.85	£212.95	£208.55

All prices exclude delivery & VAT



Technical Helpline: 01234 846400

Sales Freephone: 0800 980 0852



Acraflex™ Non-Slip

The ideal roof coating for areas subjected to pedestrian traffic

Combines all the advantages of *Acraflex* (left) with a slip-resistant additive giving a textured safety surface.

Acraflex Non-Slip Order Code	Unit Size	Coverage per Unit	Unit Price
832 0500	5kg	5m ²	£85.50
832 2000	20kg	20m ²	£248.80

Acraflex Primer Order Code	Unit Size	Coverage per Unit	Unit Price
830 3502	5kg	30-40m ²	£64.90
830 3202	20kg	120-160m ²	£196.70



3 standard colours

02

09

13



Acraflex RG **A single-pack rubber-based roof coating**

- Highly flexible and elastic
- Will far outlast bituminous coatings
- Highly UV resistant and exceptionally durable
- Helps to reduce environmental impact on the roof

Acraflex RG is extremely tough and long lasting with a high grade of rubber within the formulation. It is exceptionally durable and can easily withstand pedestrian traffic.

Acraflex RG is also incredibly flexible; highly elastic and capable of withstanding constant movement from the roof without any reduction to its superior performance. It is also highly UV resistant.

As a single-pack product, it requires no mixing. It is extremely easy to apply by either brush or roller and can be applied within a large temperature range. Acraflex RG is cold applied meaning no need for any complicated hot works machinery on the roof, removing the risk of fire.

Acraflex RG will adhere to almost any wall or roof substrate and due to the rapid curing design, it will withstand rain immediately after application with no adverse effect.

Acraflex RG has passed long term tests on a large roof area in Spain alongside many other coatings such as bitumens, acrylics and polyurethanes. Whereas all the other coatings have peeled, split, bubbled and cracked under such constant stress and high UV attack, **Acraflex RG has proven beyond doubt its superior and outstanding qualities.**

Acraflex RG	Size	Approx Coverage	Price
836 05 + col ref.	5L	5 sq.m.	£86.50
836 20 + col ref.	20L	20 sq.m.	£279.80

Acraflex RG Primer	Size	Approx Coverage	Price
836 9050	5L	15-20 sq.m	£76.90
836 9900	20L	60-80 sq.m	£248.80

RG Membrane	Size	Approx Coverage	Price
836 7100	1m x 5m	5 sq.m.	£38.80
836 7200	1m x 10m	10 sq.m.	£58.80
836 7300	1m x 100m	100 sq.m.	£485.00

All prices exclude delivery & VAT

**Incredibly
flexible and
highly elastic**

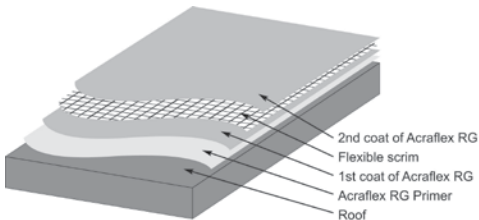
3 standard colours

02

09

13

Installed in 5 easy stages



Research has shown that a cold applied roof coating is far more likely to achieve a BREEAM A+ rating for its sustainability and environmental friendliness.

- 1 Clean the existing surface of all loose material, chippings and moss/plant growth.
- 2 Wash all areas with Polycote *Destroy IT* to kill off any residual roots that have embedded themselves within the pores of the existing substrate.
- 3 Apply one coat of Polycote *Acraflex RG Primer*.
- 4 Apply one base coat of *Acraflex RG* embedding the first coat (whilst wet) with a full layer of RG Reinforcing Membrane.
- 5 Allow first coat to cure and apply one further top coat of *Acraflex RG* to complete the system.





Roof Tile Coat **A long-term solution at a fraction of the cost of re-tiling!**

Roof Tile Coat is a high-quality, UV-resistant and flexible coating designed to seal and protect roof tiles against weathering and degeneration.

Its durable semi-matt finish has excellent 'Light-Fast' qualities which means it will not fade or lose its natural sheen due to its excellent UV resistance. The sealing also reduces the porosity of the tile surface and limits water penetration. Not only does this help prevent cracking caused by freeze-thaw cycles but also reduces the roof load when wet.

Roof Tile Coat inhibits the growth of moss and lichen and binds loose friable surfaces, preventing the accumulation of sand in the gutters.

Due to the ease and speed of application, *Roof Tile Coat* is mostly a far more cost effective solution than replacing tiles.

Roof Tile Coat is perfect for giving a new look to an old roof and is used extensively in refurbishment projects for both technical and aesthetic reasons. It is excellent for blending in old and new tiles in order to achieve a smart uniform appearance.

Roof Tile Coat Order Code	Unit Size	Coverage per Unit	Unit Price				
			1-4	5-9	10-19	20-49	50+
833 20 + col ref.	15L	40m ²	£178.65	£173.75	£168.65	£162.75	£157.60



Rooflex™ Sealant

High-performance roofing and joint sealant

A gun applied compound with outstanding weather and UV resistance. It has incredible flexibility and will allow a joint movement of up to 220%.

- Can be applied to almost any surface between -40°C and +150°C.
- Ideal for repairing joints, gaps, cracks etc

Rooflex Sealant Order Code	Unit Size	Unit Price	
		1-11	12+
824 0100	380ml Cartridge	£15.80	£14.50

All prices exclude delivery & VAT

NON-SLIP & SAFETY SOLUTIONS



**No.1
Best Selling
Paint**

PB NON-SLIP FLOOR PAINT

Easy to use, single pack paint for industrial use. Page 35.



**Drive on
time of only
40 mins**

POLYCOTE SLIP GRIP

For the most aggressive areas.
Page 64.



**No.1
Best Selling
Treads**

DURAGRIP TREADS & NOSING

Ultra tough and long lasting, weather resistant stair treads. Pages 58-59.



**Non-Slip
Roof
Coating**

ACRAFLEX NON-SLIP

Brush applied waterproof roof coating with built-in anti-slip texture. Page 95.

“maintenance made easy”

Return address: Polycote UK Wolsley Road Kempston Beds MK42 7EF



FIX THE PROBLEM & SOLVE THE ISSUE



OT Primer™

An oil tolerant and incredibly hard-wearing epoxy primer that has been professionally formulated to adhere to contaminated and oil-soaked substrates with ease.

The perfect answer for production areas, mechanical engineering and vehicle garage workshops, to completely seal the surface prior to the application of a twin pack epoxy (Polycote Flortex Professional – see pages 42/43)

From only
£107.20
see page 39

T. 01234 840400

W. www.polycote.com

E. sales@polycote.com

MAINTENANCE MADE EASY