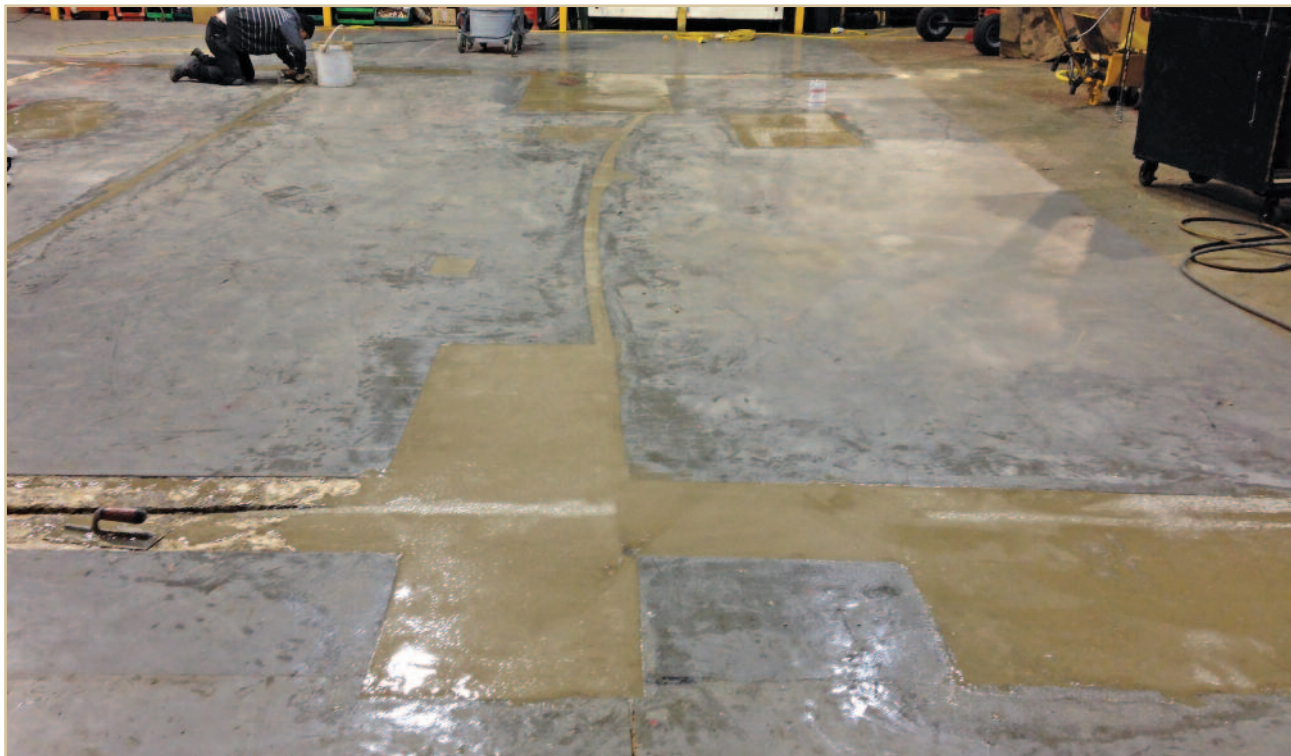


Cretex® EP Mortar



Extremely tough, three-part epoxy mortar

“maintenance made easy”



PRODUCT DESCRIPTION

Cretex EP Mortar is an extremely tough three-part epoxy mortar. It is ideal for patching and repairing large areas prior to overlaying with a floor coating. It is extremely easy to use and can be over-coated in only 3-4 hours. A primer is not generally required. However for porous surfaces, the use of EP Primer is advised.

Cretex EP Mortar is solvent free, non toxic and non taint and can therefore be used in food environments. It will also withstand very heavy traffic.

Please note that Cretex EP should be used for smaller repairs.

TYPICAL USES

Cretex EP Mortar is ideal for almost any floor repair and is particularly good for levelling large areas. It is ideal for use in factories, aircraft hangars, railway maintenance depots, food factories, car workshops, engineering plants, and many other areas.

SUITABLE SUBSTRATES

Cretex EP Mortar may be applied to most hard/porous building materials including concrete, breeze block, brick and stone.

PACKAGING

Cretex EP Mortar is supplied as a three part epoxy mortar in a 30kg unit.

DIRECTIONS FOR USE

SURFACE PREPARATION

THOROUGH SUBSTRATE PREPARATION IS ESSENTIAL.

Remove all loose material. Wire brushing is advisable. Sweep clean or vacuum.

The surface must be free from grease, oil or contamination. Polycote *Degrease IT* may be used to clean the area but this must be thoroughly rinsed off and the substrate dried, before applying *Cretex EP Mortar*. Alternatively, Polycote *OT Primer* may be used to seal the surface from oil and/or rising damp prior to the application of *EP Mortar*. Should the surface be particularly porous or weak, Polycote *EP Primer* has superb penetrative properties and will seal and ‘lock’ the substrate. Both primers should be allowed to fully cure before the application of the *EP Mortar*. See relevant data sheets for full information.

DIRECTIONS FOR USE Cont.**MIXING**

Having fully prepared the substrate, add the whole of Part B to the whole of Part A and mix thoroughly for at least 3 minutes. For best results use a slow speed drill with a mixing paddle. Finally, pour the liquid into the large bucket and add the aggregate to the desired consistency.

ENSURE THOROUGH MIXING AS AN UNMIXED PRODUCT WILL RESULT IN A POOR OR NON-CURE SITUATION.

APPLICATION

Apply by trowel, or by hand for small isolated areas, wearing suitable protective gloves.

Being resin-rich, *Cretex EP Mortar* has a typically sticky consistency and smoothing may be assisted by wetting the trowel using Polycote Solvent Cleaner as a release agent.

If when trowelling the mortar the texture remains 'open' this can be easily 'closed' by slightly tamping the surface with the trowel. This can provide an extremely hard wearing and completely sealed surface.

For vertical repairs – where step nosings or expansion joint edges have broken away, the vertical face of the repair material should be supported to prevent slumping.

Suitable sized wooden shuttering should be covered with polythene to reduce adhesion, and should be removed as soon as the material is firm.

POT LIFE & CURING TIMES

The pot life of *Cretex EP Mortar* once mixed is approx. 15 minutes.

Important: If the mix is not used within the pot life it will generate heat and may generate fumes through the reaction process.

Can be overcoated after 4 hours or once surface has lost tackiness.

Initial curing takes place within 6-8 hours depending on temperature.

Full strength is achieved after 7 days.

APPLICATION TEMPERATURE

Normal application temperature is between 10°C and 30°C.

APPLICATION THICKNESS

Cretex EP Mortar can be laid to any thickness, however when feather-edging, add less aggregate to give a more resin rich formulation.

COVERAGE

The coverage rate per 30kg unit is 3m² at 5mm nominal thickness.

CLEANING

Tools and equipment should be cleaned whilst resin is still wet with Solvent Cleaner.

Hands and skin should be cleaned immediately with Organic Hand Cleaner.

SHELF LIFE AND STORAGE

Shelf life in unopened containers is approximately 12 months subject to conditions of storage.

Store in a cool, dry, frost-free environment away from sources of ignition, sealing the surface for protection against oil and other spillages.

CE

Polycote UK, Centre Point, Wolseley Road,
Woburn Road Industrial Estate, Kempston,
Beds MK42 7EF

13

BSEN 13813 SR B 3.4

Resin coating/screed for use internally
as per Polycote data sheet

Bond strength:

B 3.4

HEALTH & SAFETY

Before using this product, please ensure you have received and read carefully both the Hazard Label applied to the container and the relevant Material Safety Data Sheets.

ANY QUESTIONS?

Polycote Technical Helpline
01234 846400

All reasonable care has been taken in supplying the above information. However, any figures quoted do not constitute a specification but represent typical values obtained. It is the customer's responsibility to ensure for himself that the product is fit for the intended purpose and that conditions are suitable. Any technical advice is offered in good faith, but without warranty. This is also applicable when proprietary rights and third parties are involved. In the light of the Company's policy of continual research and development, it is the customer's responsibility to ensure that the information contained herein has not been superseded.

REV: 06/17

Polycote UK
Centre Point • Wolseley Road
Woburn Road Industrial Estate
Kempston • Beds • MK42 7EF
Technical Helpline: 01234 846400

CE

POLYCOTE®
Est. 1991

“maintenance made easy”